

Strain		DSM 106635
Genus		<i>Spongiactinospora</i>
Species		<i>rosea</i>
Genbank accession numbers		16S rRNA gene: MG200157 whole genome shotgun sequence: QMEY000000000
Status		
Risk group		1 (provisional classification by DSMZ)
Type strain		LHW63015, CCTCC AA 2018019
Reference		
Author		Li, L., Gui, Y. H., Xu, Q. H., Lin, H. W., Lu, Y. H.
Title		<i>Spongiactinospora rosea</i> gen. nov., sp. nov., a new member of the family Streptosporangiaceae
Journal		Int J Syst Evol Microbiol
Volume		65 (2)
Page		427-433
Year		2019
Morphology		
Agar	ISP 2 - growth/G	Good
Agar	ISP 2 - colony color/R	8017 Chocolate brown, 8029 Grey brown
Agar	ISP 2 - aerial mycelium/A	None
Agar	ISP 2 - soluble pigment/S	1024 Ochre yellow
Agar	ISP 3 - G	Sparse
Agar	ISP 3 - R	8001 Ochre brown, 8000 Green brown
Agar	ISP 3 - A	None
Agar	ISP 3 - S	None
Agar	ISP 4 - G	Sparse
Agar	ISP 4 - R	8001 Ochre brown
Agar	ISP 4 - A	None
Agar	ISP 4 - S	None
Agar	ISP 5 - G	Sparse
Agar	ISP 5 - R	8001 Ochre brown, 8003 Clay brown
Agar	ISP 5 - A	None
Agar	ISP 5 - S	None
Agar	ISP 6 - G	Good
Agar	ISP 6 - R	1001 Brown beige, 1002 Sand yellow
Agar	ISP 6 - A	None
Agar	ISP 6 - S	1024 Ochre yellow

Compendium of Actinobacteria from Dr. Joachim M. Wink
University of Braunschweig

Agar	ISP 7 - G	Sparse
Agar	ISP 7 - R	8003 Clay brown
Agar	ISP 7 - A	None
Agar	ISP 7 - S	None
Agar	suter with tyrosine - G	Sparse
Agar	suter with tyrosine - R	8003 Clay brown
Agar	suter with tyrosine - A	None
Agar	suter with tyrosine - S	None
Agar	suter without tyrosine - G	Sparse
Agar	suter without tyrosine - R	8001 Ochre brown
Agar	suter without tyrosine - A	None
Agar	suter without tyrosine - S	None
	Sporechains/Sporangia	
Physiology		
Melanin		0
pH	range	
pH	optimum	
temperature	range	
temperature	optimum	
sodium chloride tolerance		2,5%
lysozyme tolerance		
use of carbohydrates	glucose	+
use of carbohydrates	arabinose	-
use of carbohydrates	sucrose	(+)
use of carbohydrates	xylose	-
use of carbohydrates	inositol	-
use of carbohydrates	mannose	-
use of carbohydrates	fructose	(+)
use of carbohydrates	rhamnose	-
use of carbohydrates	raffinose	-
use of carbohydrates	cellulose	-
Api zym	Phosphatase alkaline	2
Api zym	Esterase (C4)	3
Api zym	Esterase Lipase (C8)	2
Api zym	Lipase (C14)	1
Api zym	Leucin arylamidase	5
Api zym	Valine arylamidase	3
Api zym	Cystine arylamidase	0
Api zym	Trypsin	1
Api zym	Chymotrypsin	2
Api zym	Phosphatase acid	0
Api zym	Naphtol-AS-BI-phosphohydrolase	1
Api zym	alpha galactosidase	0
Api zym	beta galactosidase	0

Compendium of Actinobacteria from Dr. Joachim M. Wink
University of Braunschweig

Api zym	beta glucuronidase	0
Api zym	alpha glucosidase	5
Api zym	beta glucosidase	0
Api zym	N-acetyl-beta-glucoseamidase	5
Api zym	alpha mannosidase	1
Api zym	alpha fucosidase	0
Api coryne	nitrate reduction	-
Api coryne	Pyrazinamidase	-
Api coryne	Pyrrolidonyl arylamidase	-
Api coryne	Alkaline phosphatase	-
Api coryne	beta glucuronidase	-
Api coryne	beta galactosidase	-
Api coryne	alpha glucosidase	-
Api coryne	N-acetyl -beta glucoseamidase	+
Api coryne	Esculin (beta glucosidase)	-
Api coryne	Urease	+
Api coryne	Gelatine(hydrolysis)	+
Api coryne	Glucose fermentation	-
Api coryne	Ribose fermentation	-
Api coryne	Xylose fermentation	-
Api coryne	Mannitol fermentation	-
Api coryne	Maltose fermentation	-
Api coryne	Lactose fermentation	-
Api coryne	Sucrose fermentation	-
Api coryne	Glycogen fermentation	-
Metabolites		
Antimicrobial	Staphylococcus aureus	
Antimicrobial	Escherichia coli	
Antimicrobial	Micrococcus luteus	
Antimicrobial	Pseudomonas aeruginosa	
Antimicrobial	Streptomyces murinus	
Antimicrobial	Bacillus subtilis	
Antimicrobial	Candida albicans	
Antimicrobial	Saccharomyces cerevisiae	
Antimicrobial	Aspergillus niger	

Apicoryne



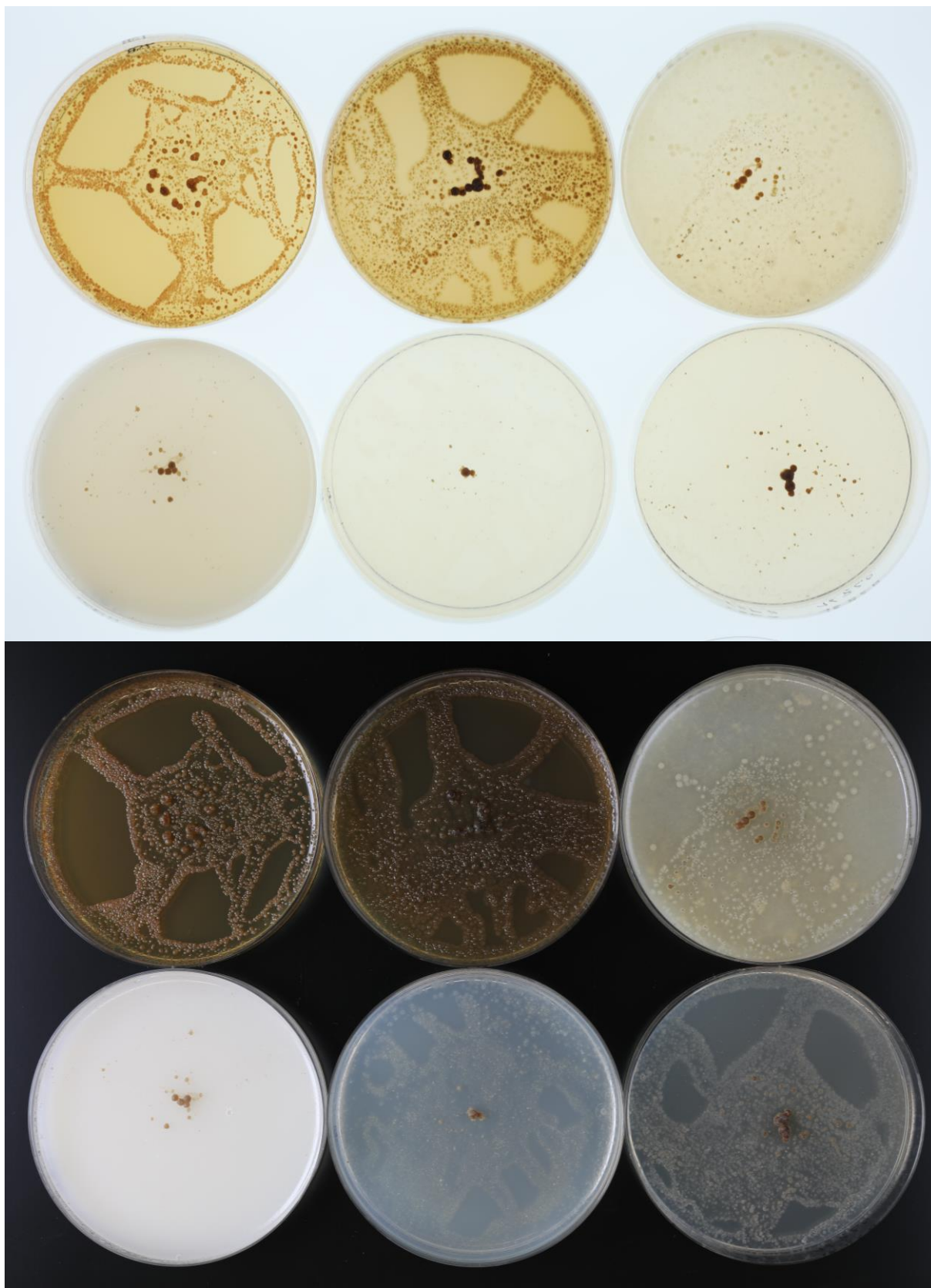
Abbildung 1: Apicoryne-Teststreifen mit Keim DSM.

Apizym



Abbildung 2: Apizym-Teststreifen mit Keim DSM.

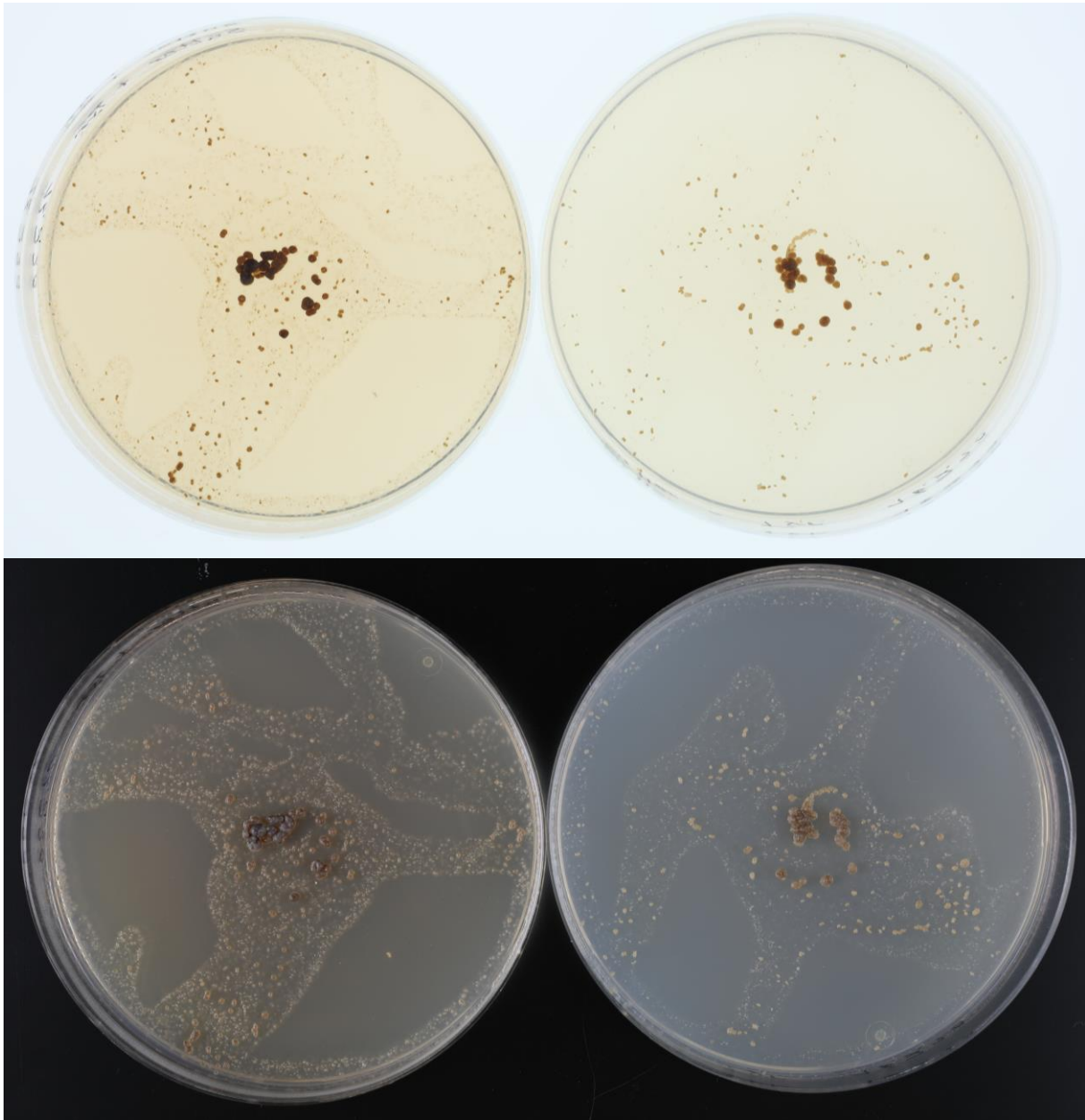
Plates (TSB, ISP2, ISP3, ISP4, ISP5, ISP7)



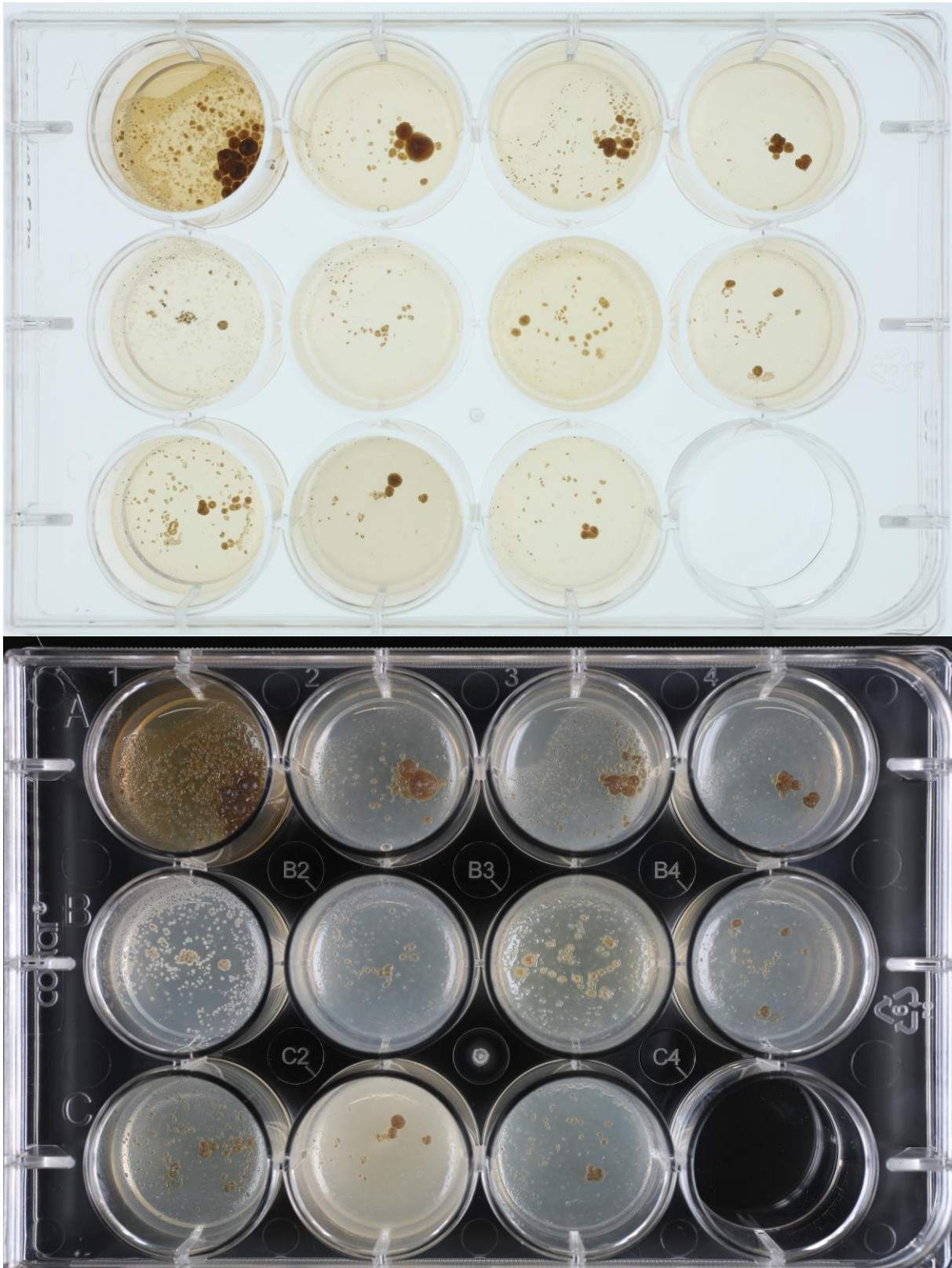
(ISP6, ISP7)



(SSM+T, SSM-T)



Carbon utilization test (from top left to bottom right: glucose, arabinose, sucrose, xylose, inositol, mannose, fructose, rhamnose, raffinose, cellulose)



Sodium chloride tolerance test (from top left to bottom right: 0%, 2,5%, 5%, 7,5%, 10%)

