

Compendium of Actinobacteria from Dr. Joachim M. Wink
University of Braunschweig

Strain		DSM 16420
Genus		<i>Kocuria</i>
Species		<i>marina</i>
Status		
Risk group		L1
Type strain		CCUG 51442, JCM 13363, KCTC 9943, KMM 3905
Reference		
Author		Kim, S. B., Nedashkovskaya, O. I., Mikhailov, V. V., Han, S. K., Kim, K. O., Rhee, M. S., Bae, K. S.
Title		<i>Kocuria marina</i> sp. nov., a novel actinobacterium isolated from marine sediment
Journal		<i>Int.J.Syst.Evol.Microbiol.</i>
Volume		54
Page		1617-1620
Year		2004
Morphology		
Agar	ISP 2 - growth/G	good
Agar	ISP 2 - colony color/R	honey yellow (1005)
Agar	ISP 2 - aerial mycelium/A	none
Agar	ISP 2 - soluble pigment/S	maize yellow (1006)
Agar	ISP 3 - G	good
Agar	ISP 3 - R	lemon yellow (1012)
Agar	ISP 3 - A	none
Agar	ISP 3 - S	none
Agar	ISP 4 - G	none- sparse
Agar	ISP 4 - R	colourless
Agar	ISP 4 - A	none
Agar	ISP 4 - S	none
Agar	ISP 5 - G	good
Agar	ISP 5 - R	sulfur yellow (1016)
Agar	ISP 5 - A	none
Agar	ISP 5 - S	none
Agar	ISP 6 - G	sparse
Agar	ISP 6 - R	sufur yellow (1016)
Agar	ISP 6 - A	none
Agar	ISP 6 - S	olive brown (8008)
Agar	ISP 7 - G	sparse
Agar	ISP 7 - R	sand yellow (1002), zinc yellow (1018)
Agar	ISP 7 - A	none
Agar	ISP 7 - S	none
Agar	suter with tyrosine - G	good
Agar	suter with tyrosine - R	sand yellow (1002)

Compendium of Actinobacteria from Dr. Joachim M. Wink
University of Braunschweig

Agar	suter with tyrosine - A	none
Agar	suter with tyrosine - S	sand yellow (1002)
Agar	suter without tyrosine - G	good
Agar	suter without tyrosine - R	lemon yellow (1012)
Agar	suter without tyrosine - A	none
Agar	suter without tyrosine - S	none
	Sporechains/Sporangia	
Physiology		
Melanin		(+) - - -
pH	range	
pH	optimum	
temperature	range	
temperature	optimum	
sodium chloride tolerance		7,5%
lysozyme tolerance		
use of carbohydrates	glucose	+
use of carbohydrates	arabinose	-
use of carbohydrates	sucrose	+
use of carbohydrates	xylose	-
use of carbohydrates	inositol	+
use of carbohydrates	mannose	(+)
use of carbohydrates	fructose	++
use of carbohydrates	rhamnose	(+)
use of carbohydrates	raffinose	-
use of carbohydrates	cellulose	-
Api zym	Phosphatase alcaline	4
Api zym	Esterase (C4)	1
Api zym	Esterase Lipase (C8)	3
Api zym	Lipase (C14)	3
Api zym	Leucin arylamidase	5
Api zym	Valine arylamidase	4
Api zym	Cystine arylamidase	2
Api zym	Trypsin	0
Api zym	Chymotrypsin	0
Api zym	Phosphatase acid	0
Api zym	Naphtol-AS-BI-phosphohydrolase	2
Api zym	alpha galactosidase	0
Api zym	beta galactosidase	3
Api zym	beta glucuronidase	0
Api zym	alpha glucosidase	5
Api zym	beta glucosidase	0
Api zym	N-acetyl-beta-glucoseamidase	0
Api zym	alpha mannosidase	0
Api zym	alpha fucosidase	0

Api coryne	nitrate reduction	+
Api coryne	Pyrazinamidase	+
Api coryne	Pyrrolidonyl arylamidase	+
Api coryne	Alkaline phosphatase	+
Api coryne	beta glucuronidase	-
Api coryne	beta galactosidase	+
Api coryne	alpha glucosidase	+
Api coryne	N-acetyl -beta glucoseamidase	-
Api coryne	Esculin (beta glucosidase)	-
Api coryne	Urease	+
Api coryne	Gelatine(hydrolysis)	-
Api coryne	Glucose fermentation	-
Api coryne	Ribose fermentation	-
Api coryne	Xylose fermentation	-
Api coryne	Mannitol fermentation	-
Api coryne	Maltose fermentation	-
Api coryne	Lactose fermentation	-
Api coryne	Sucrose fermentation	-
Api coryne	Glycogen fermentation	-

Apicoryne



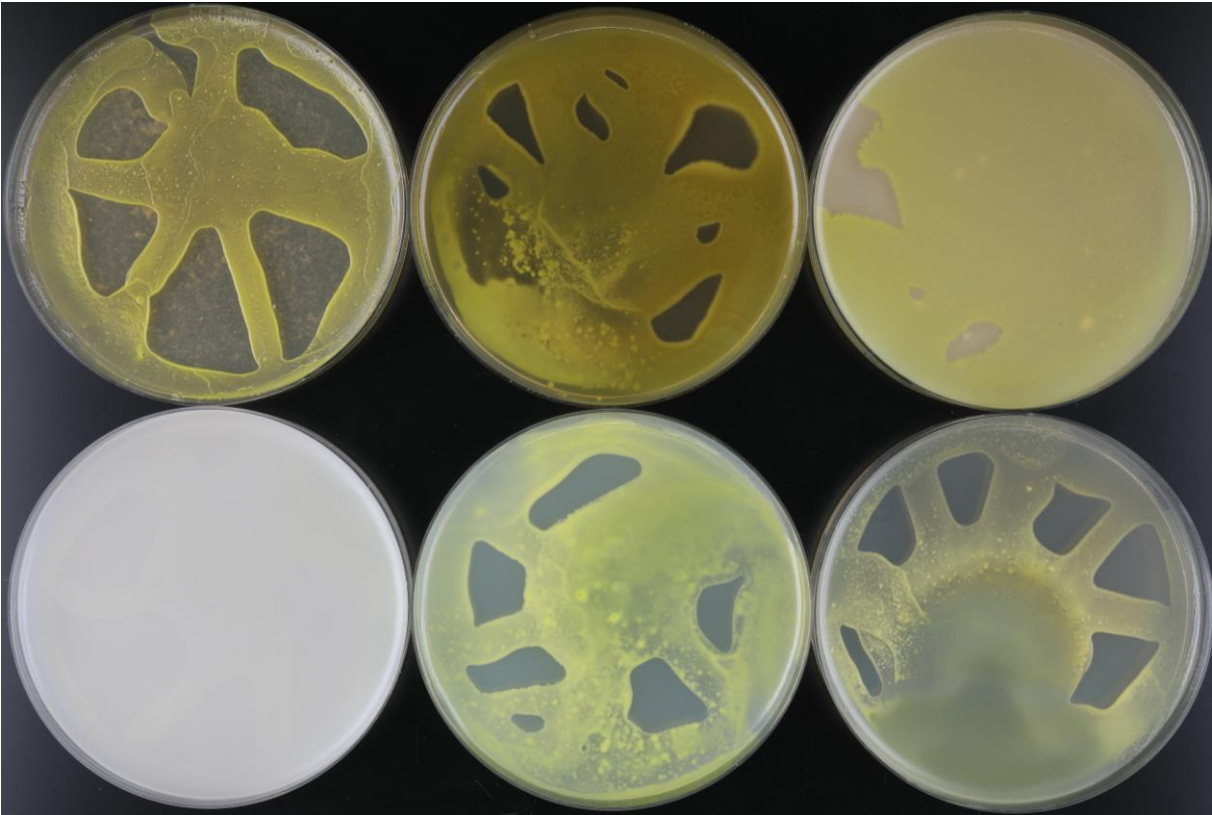
Abbildung 1: Apicoryne-Teststreifen mit Keim DSM 16420.

Apizym

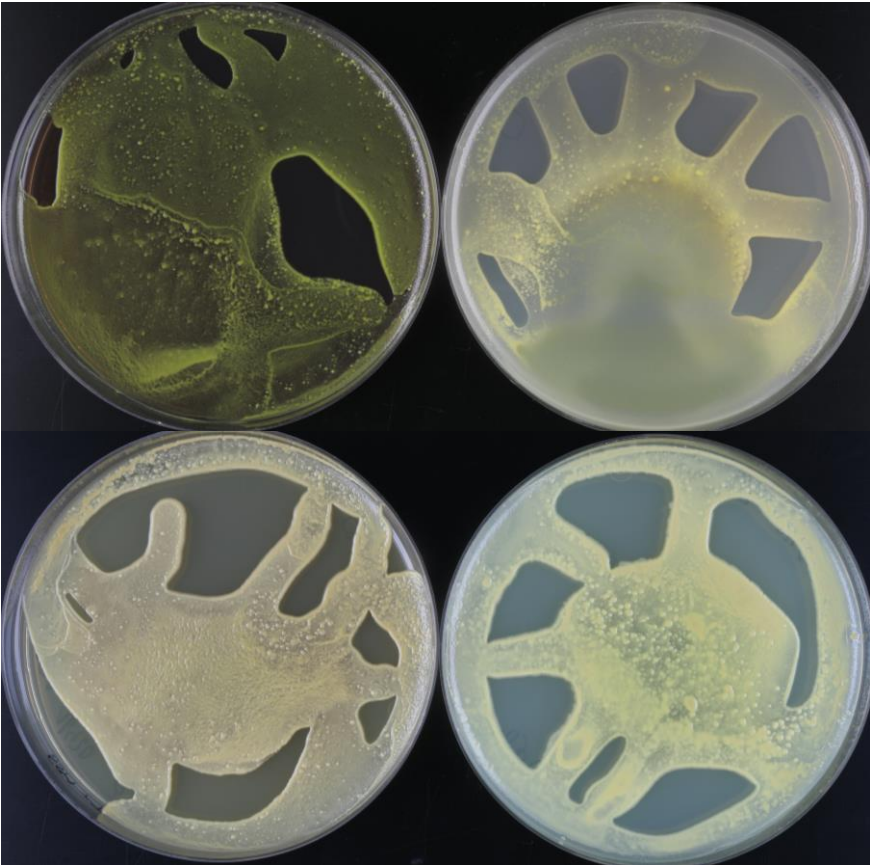
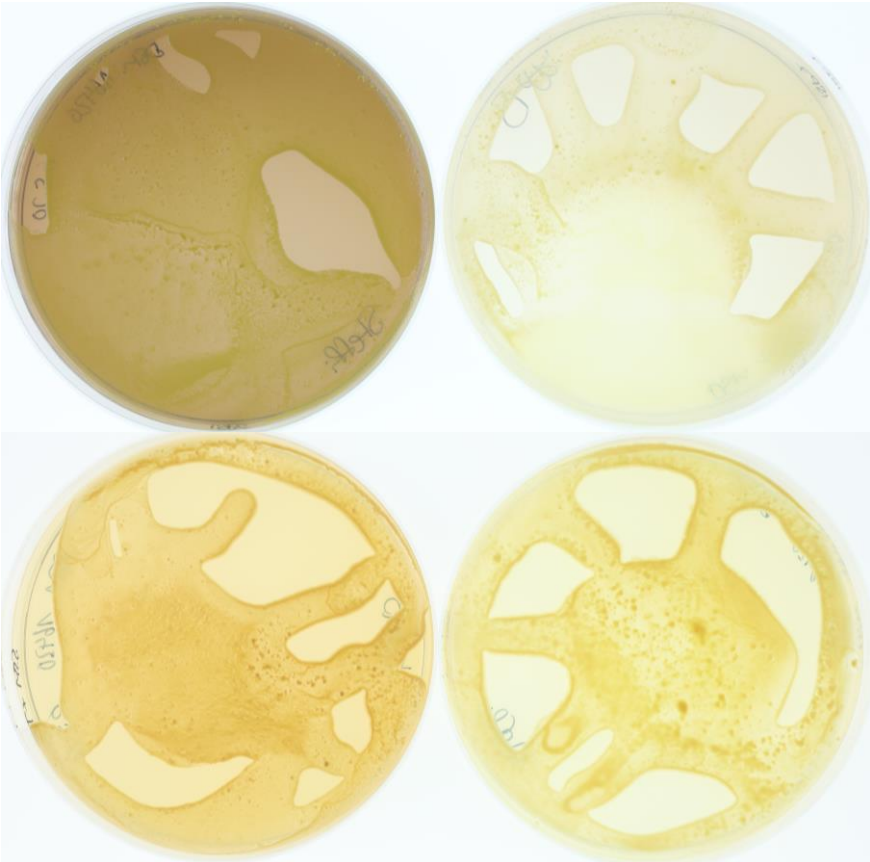


Abbildung 2: Apizym-Teststreifen mit Keim DSM 16420.

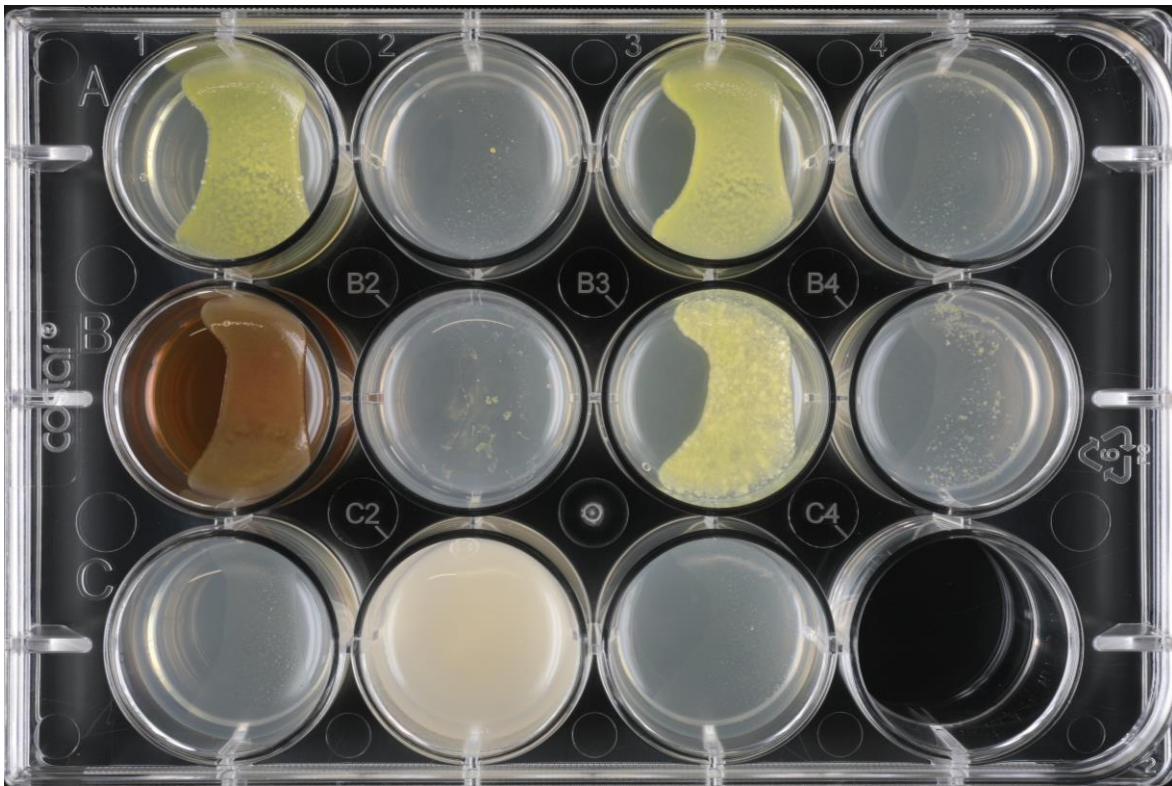
Plates (514, ISP2, ISP3, ISP4, ISP5, ISP7)



(ISP6, ISP7, SSM+T, SSM-T)



Carbon utilization test (from top left to bottom right: glucose, arabinose, sucrose, xylose, inositol, mannose, fructose, rhamnose, raffinose, cellulose)



**Sodium chloride tolerance test (from top left to bottom right: 0%, 2,5%, 5%,
7,5%, 10%)**

