

<b>Strain</b>		DSM 41918
Genus		<b><i>Streptomyces</i></b>
Species		<b><i>marokkonensis</i></b>
Genbank accession numbers		16S rRNA gene: <a href="#">AJ965470</a>
<b>Status</b>		
Risk group		L1
Type strain		AP1, CCMM 2001, R-22003, LMG 23016
<b>Reference</b>		
Author		Bouizgarne, B., Lanoot, B., Loqman, S., Spröer, C., Klenk, H. P., Swings, J., Ouhdouch, Y.
Title		<i>Streptomyces marokkonensis</i> sp. nov., isolated from rhizosphere soil of <i>Argania spinosa</i> L.
Journal		Int J Syst Evol Microbiol
Volume		59 (Pt11)
Page		2857-2863
Year		2009
<b>Morphology</b>		
Agar	ISP 2 - growth/G	Good
Agar	ISP 2 - colony color/R	8000 Green Brown, 8008 Olive brown
Agar	ISP 2 - aerial mycelium/A	Sparse, 7044 Silk grey
Agar	ISP 2 - soluble pigment/S	1042 Ochre yellow
Agar	ISP 3 - G	Good
Agar	ISP 3 - R	1014 Ivory, 1019 Grey beige
Agar	ISP 3 - A	Good, 9002 Grey white
Agar	ISP 3 - S	1002 Sand yellow
Agar	ISP 4 - G	Sparse
Agar	ISP 4 - R	7023 Concrete grey, 8028 Terra brown
Agar	ISP 4 - A	Sparse, 1013 Oyster white
Agar	ISP 4 - S	8000 Green brown
Agar	ISP 5 - G	Sparse
Agar	ISP 5 - R	8000 Green brown, 8028 Terra brown
Agar	ISP 5 - A	Good, 7044 Silk grey
Agar	ISP 5 - S	1002 Sand yellow
Agar	ISP 6 - G	Sparse
Agar	ISP 6 - R	8025 Pale brown, 1011 Brown beige
Agar	ISP 6 - A	None
Agar	ISP 6 - S	None

Compendium of Actinobacteria from Dr. Joachim M. Wink  
University of Braunschweig

Agar	ISP 7 - G	Good
Agar	ISP 7 - R	6008 Brown green, 7002 Olive grey
Agar	ISP 7 - A	Good, 7030 Stone grey, 7038 Agate grey
Agar	ISP 7 - S	1024 Ochre yellow
Agar	suter with tyrosine - G	Sparse - good
Agar	suter with tyrosine - R	8008 Olive brown
Agar	suter with tyrosine - A	Good, 7030 Stone grey, 7047 Telegrey 4
Agar	suter with tyrosine - S	1024 Ochre yellow
Agar	suter without tyrosine - G	Sparse
Agar	suter without tyrosine - R	8008 Olive brown
Agar	suter without tyrosine - A	Good, 7030 Stone grey, 7047 Telegrey 4
Agar	suter without tyrosine - S	1024 Ochre yellow
	Sporechains/Sporangia	
<b>Physiology</b>		
Melanin		-
pH	range	
pH	optimum	
temperature	range	
temperature	optimum	
sodium chloride tolerance		7,5 %
lysozyme tolerance		
use of carbohydrates	glucose	+
use of carbohydrates	arabinose	(+)
use of carbohydrates	sucrose	(+)
use of carbohydrates	xylose	++
use of carbohydrates	inositol	(+)
use of carbohydrates	mannose	+
use of carbohydrates	fructose	++
use of carbohydrates	rhamnose	+
use of carbohydrates	raffinose	-
use of carbohydrates	cellulose	+
Api zym	Phosphatase alkaline	5
Api zym	Esterase (C4)	3
Api zym	Esterase Lipase (C8)	3
Api zym	Lipase (C14)	2
Api zym	Leucin arylamidase	5
Api zym	Valine arylamidase	1
Api zym	Cystine arylamidase	0
Api zym	Trypsin	0
Api zym	Chymotrypsin	0
Api zym	Phosphatase acid	5
Api zym	Naphtol-AS-BI-phosphohydrolase	5

Compendium of Actinobacteria from Dr. Joachim M. Wink  
University of Braunschweig

Api zym	alpha galactosidase	0
Api zym	beta galactosidase	5
Api zym	beta glucuronidase	0
Api zym	alpha glucosidase	3
Api zym	beta glucosidase	4
Api zym	N-acetyl-beta-glucoseamidase	5
Api zym	alpha mannosidase	5
Api zym	alpha fucosidase	0
Api coryne	nitrate reduction	-
Api coryne	Pyrazinamidase	-
Api coryne	Pyrrolidonyl arylamidase	-
Api coryne	Alkaline phosphatase	+
Api coryne	beta glucuronidase	-
Api coryne	beta galactosidase	-
Api coryne	alpha glucosidase	-
Api coryne	N-acetyl -beta glucoseamidase	-
Api coryne	Esculin (beta glucosidase)	-
Api coryne	Urease	-
Api coryne	Gelatine(hydrolysis)	+
Api coryne	Glucose fermentation	-
Api coryne	Ribose fermentation	-
Api coryne	Xylose fermentation	-
Api coryne	Mannitol fermentation	-
Api coryne	Maltose fermentation	-
Api coryne	Lactose fermentation	-
Api coryne	Sucrose fermentation	-
Api coryne	Glycogen fermentation	-
<b>Metabolites</b>		
Antimicrobial	Staphylococcus aureus	
Antimicrobial	Escherichia coli	
Antimicrobial	Micrococcus luteus	
Antimicrobial	Pseudomonas aeruginosa	
Antimicrobial	Streptomyces murinus	
Antimicrobial	Bacillus subtilis	
Antimicrobial	Candida albicans	
Antimicrobial	Saccharomyces cerevisiae	
Antimicrobial	Aspergillus niger	

## Apicoryne



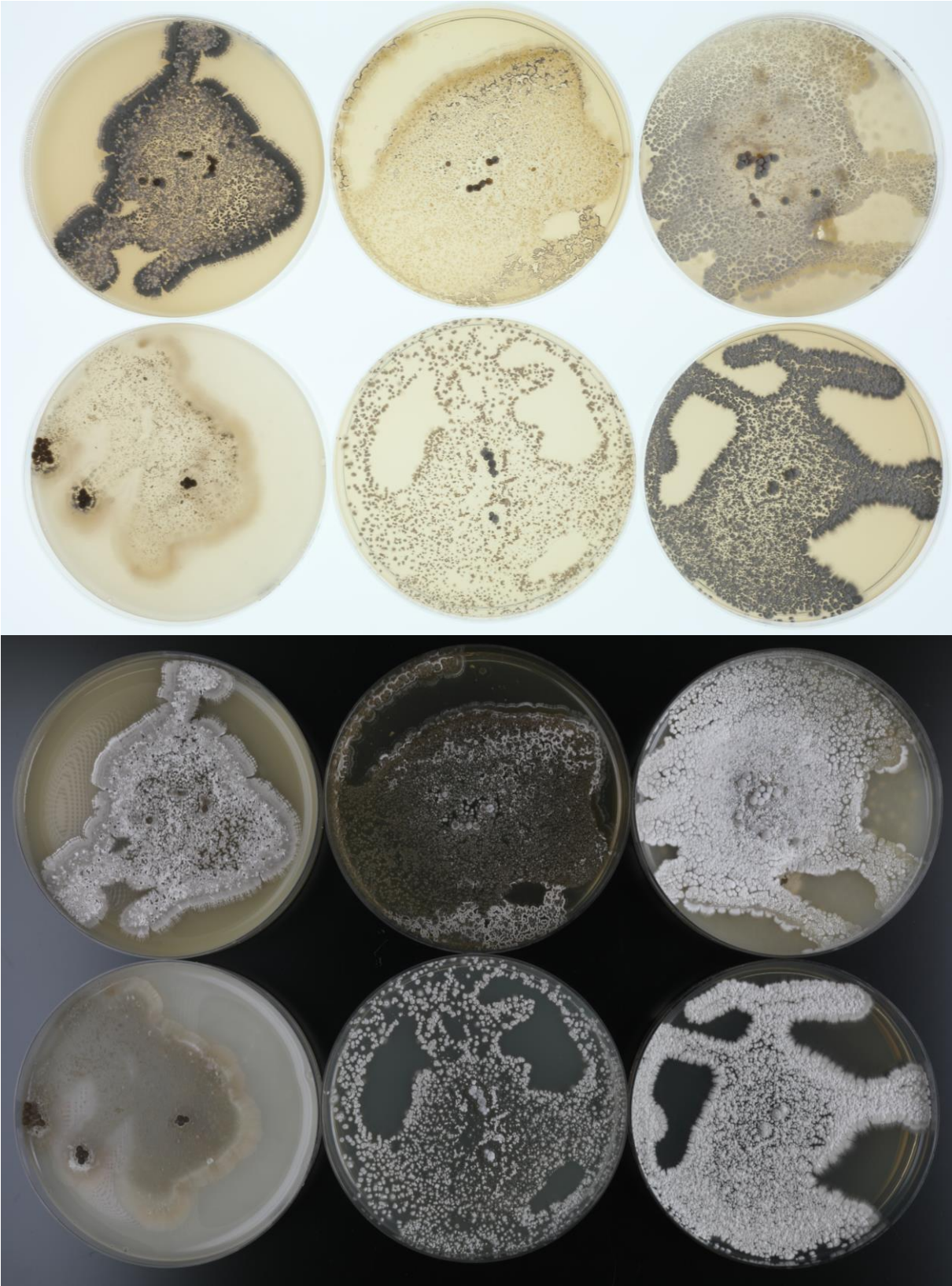
Abbildung 1: Apicoryne-Teststreifen mit Keim DSM.

## Apizym

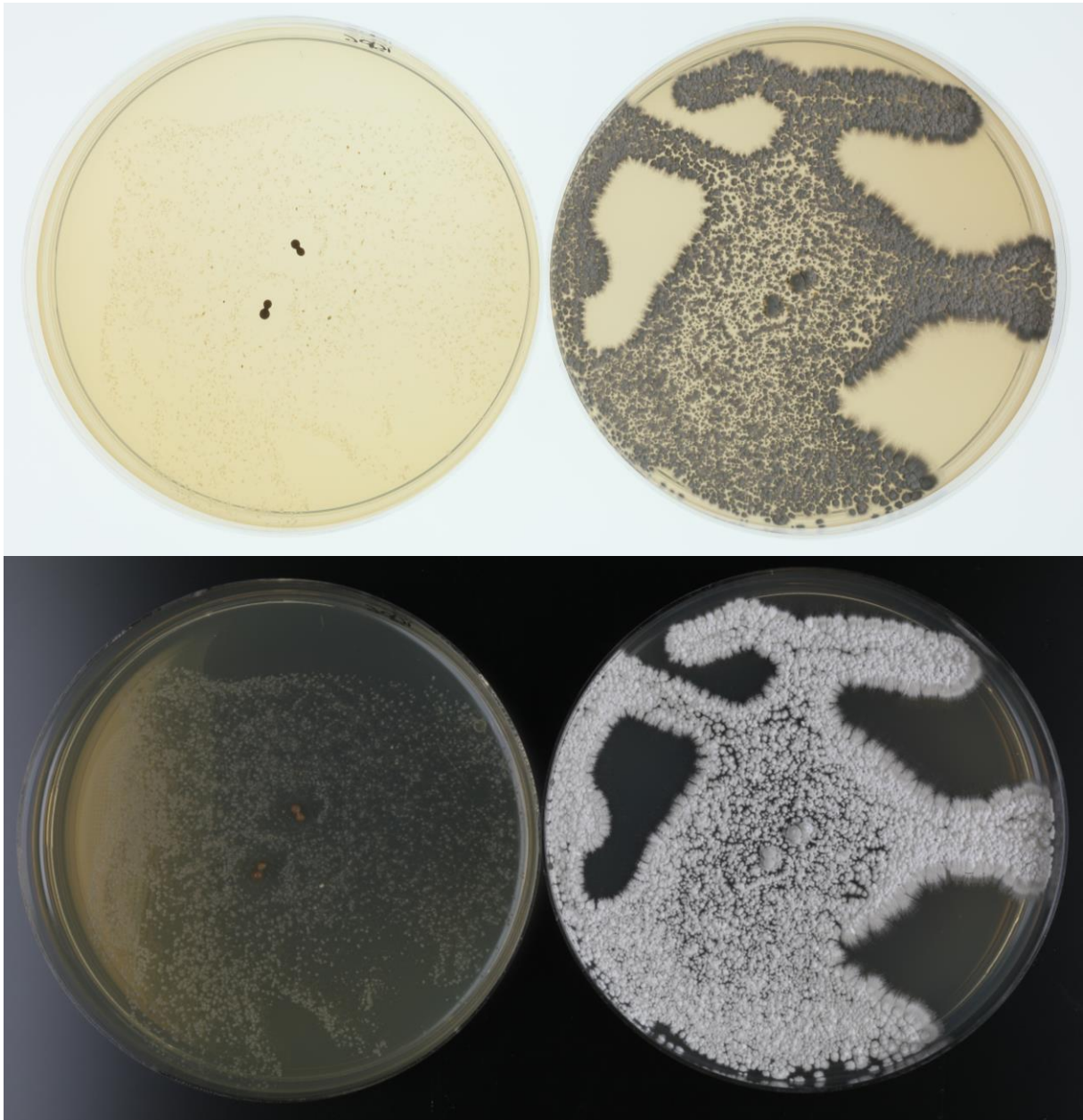


Abbildung 2: Apizym-Teststreifen mit Keim DSM.

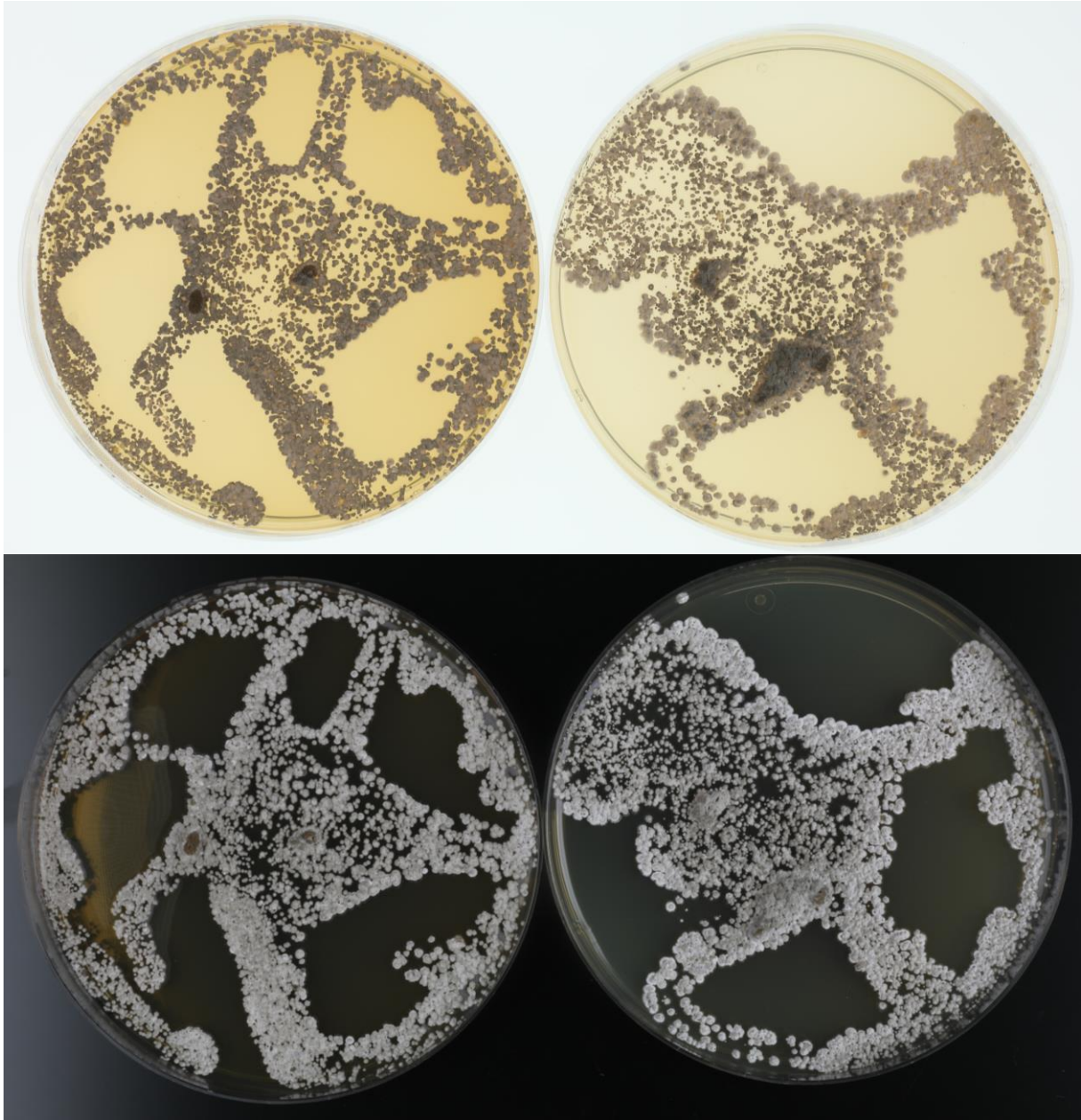
**Plates (65, ISP2, ISP3, ISP4, ISP5, ISP7)**



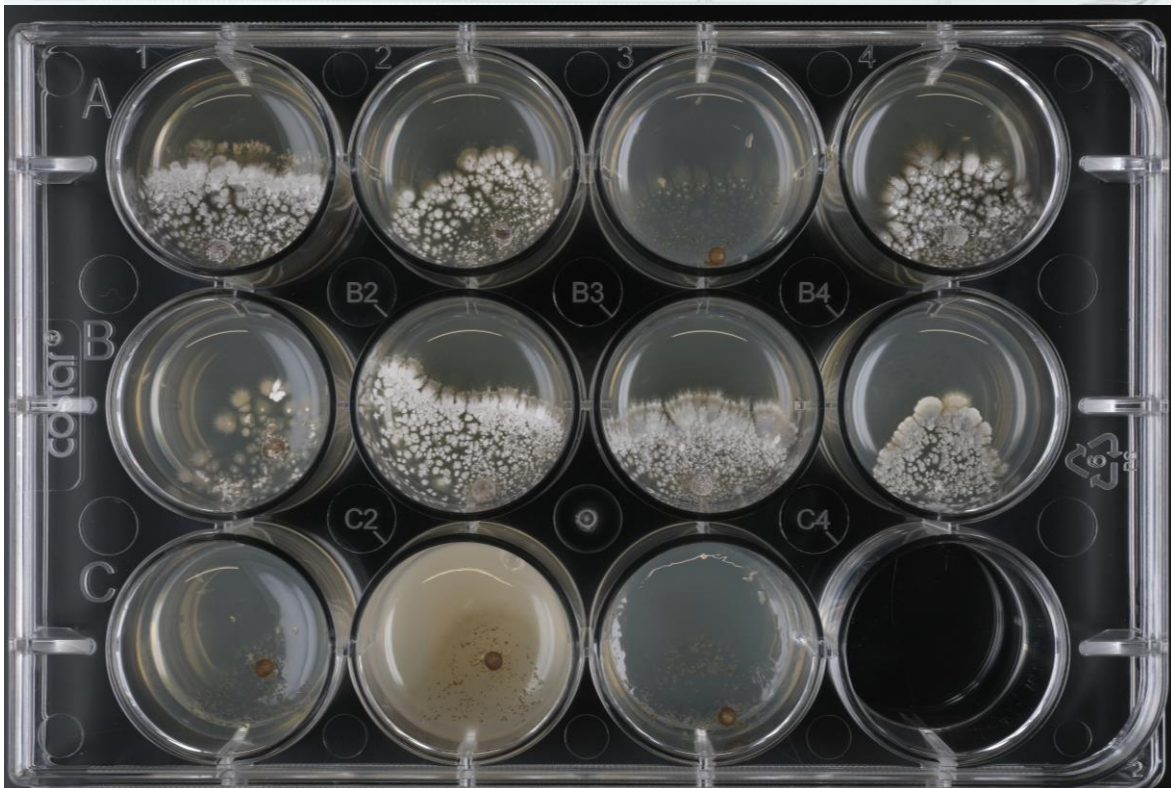
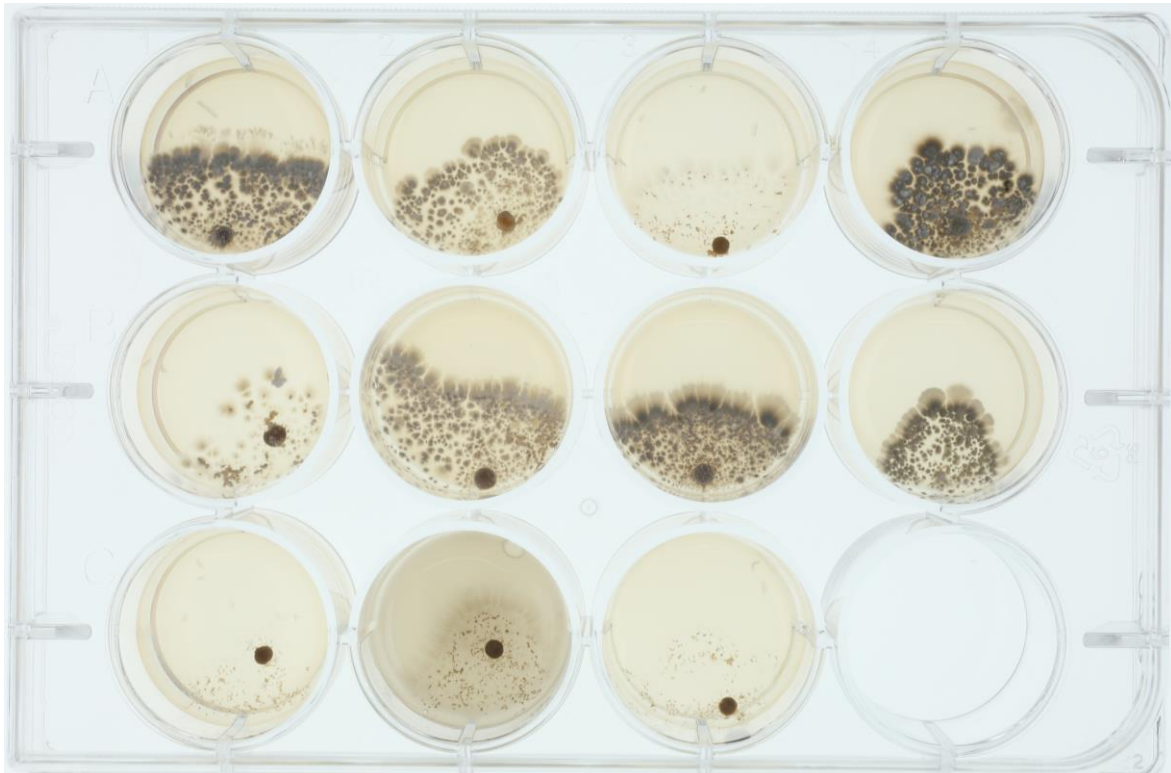
(ISP6, ISP7)



(SSM+T, SSM-T)



**Carbon utilization test (from top left to bottom right: glucose, arabinose, sucrose, xylose, inositol, mannose, fructose, rhamnose, raffinose, cellulose)**





**Sodium chloride tolerance test (from top left to bottom right: 0%, 2,5%, 5%, 7,5%, 10%)**

