

Compendium of Actinobacteria from Dr. Joachim M. Wink
University of Braunschweig

Strain		DSM 43041
Genus		<i>Planobispora</i>
Species		<i>longispora</i>
Status		valid
Risk group		1
Type strain		Pb-1075; ATCC 23867,CBS 115.69,IAM 14288,IFO 13879,IFO 13918,JCM 3092,KCC A-0092,NBRC 13879,NBRC 13918,NCIMB 13269,VKM Ac-700
Genbank accession numbers		
Reference		
Author		Thiemann, J. E., Beretta, G.
Title		A new genus of the Actinoplanaceae: Planobispora, gen. nov.
Journal		Arch.Mikrobiol.
Volume		62
Page		157
Year		1968
Morphology		
Agar	ISP 2 - growth/G	good
Agar	ISP 2 - colony color/R	ivory (1014)
Agar	ISP 2 - aerial mycelium/A	none
Agar	ISP 2 - soluble pigment/S	none
Agar	ISP 3 - G	sparse
Agar	ISP 3 - R	light ivory (1015)
Agar	ISP 3 - A	none
Agar	ISP 3 - S	none
Agar	ISP 4 - G	sparse
Agar	ISP 4 - R	light ivory (1015)
Agar	ISP 4 - A	none
Agar	ISP 4 - S	none
Agar	ISP 5 - G	sparse
Agar	ISP 5 - R	oyster white (1013)
Agar	ISP 5 - A	none
Agar	ISP 5 - S	none
Agar	ISP 6 - G	sparse
Agar	ISP 6 - R	ivory (1014)
Agar	ISP 6 - A	none
Agar	ISP 6 - S	none
Agar	ISP 7 - G	sparse
Agar	ISP 7 - R	oyster white (1013)
Agar	ISP 7 - A	none

Compendium of Actinobacteria from Dr. Joachim M. Wink
University of Braunschweig

Agar	ISP 7 - S	none
Agar	suter with tyrosine - G	sparse
Agar	suter with tyrosine - R	beige (1001)
Agar	suter with tyrosine - A	none
Agar	suter with tyrosine - S	none
Agar	suter without tyrosine - G	sparse
Agar	suter without tyrosine - R	beige (1001)
Agar	suter without tyrosine - A	none
Agar	suter without tyrosine - S	none
	Sporechains/Sporangia	
Physiology		
Melanin		---- 0
pH	range	
pH	optimum	
temperature	range	
temperature	optimum	
sodium chloride tolerance		0%
lysozyme tolerance		
use of carbohydrates	glucose	+
use of carbohydrates	arabinose	(+)
use of carbohydrates	sucrose	-
use of carbohydrates	xylose	(+)
use of carbohydrates	inositol	(+)
use of carbohydrates	mannose	(+)
use of carbohydrates	fructose	(+)
use of carbohydrates	rhamnose	-
use of carbohydrates	raffinose	-
use of carbohydrates	cellulose	-
Api zym	Phosphatase alkaline	5
Api zym	Esterase (C4)	2
Api zym	Esterase Lipase (C8)	2
Api zym	Lipase (C14)	3
Api zym	Leucin arylamidase	5
Api zym	Valine arylamidase	5
Api zym	Cystine arylamidase	2
Api zym	Trypsin	1
Api zym	Chymotrypsin	3
Api zym	Phosphatase acid	3
Api zym	Naphtol-AS-BI-phosphohydrolase	3
Api zym	alpha galactosidase	0
Api zym	beta galactosidase	3
Api zym	beta glucuronidase	0
Api zym	alpha glucosidase	5
Api zym	beta glucosidase	5

Api zym	N-acetyl-beta-glucoseamidase	4
Api zym	alpha mannosidase	0
Api zym	alpha fucosidase	0
Api coryne	nitrate reduction	+
Api coryne	Pyraziamidase	-
Api coryne	Pyrrolidonyl arylamidase	-
Api coryne	Alkaline phosphatase	+
Api coryne	beta glucuronidase	-
Api coryne	beta galactosidase	(+)
Api coryne	alpha glucosidase	+
Api coryne	N-acetyl -beta glucoseamidase	+
Api coryne	Esculin (beta glucosidase)	+
Api coryne	Urease	-
Api coryne	Gelatine(hydrolysis)	+
Api coryne	Glucose fermentation	-
Api coryne	Ribose fermentation	-
Api coryne	Xylose fermentation	-
Api coryne	Mannitol fermentation	-
Api coryne	Maltose fermentation	-
Api coryne	Lactose fermentation	-
Api coryne	Sucrose fermentation	-
Api coryne	Glycogen fermentation	-

Apicoryne



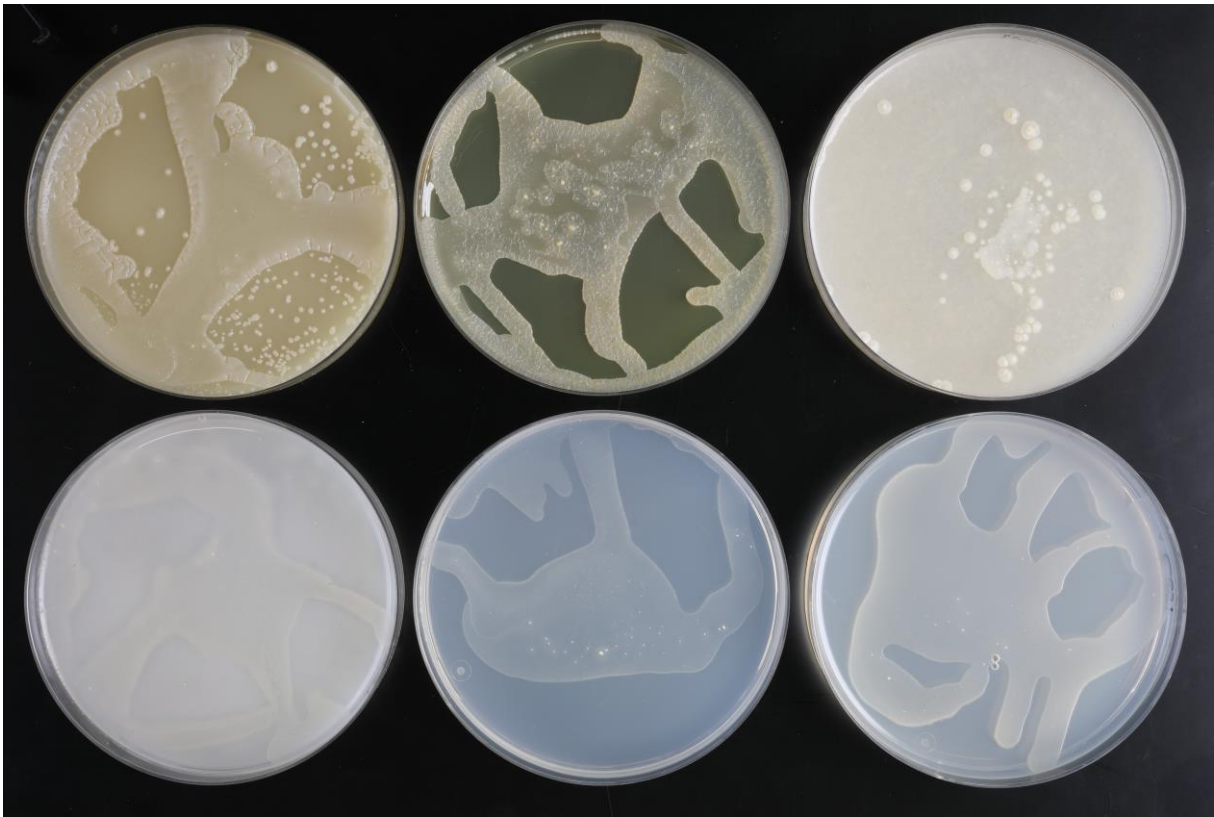
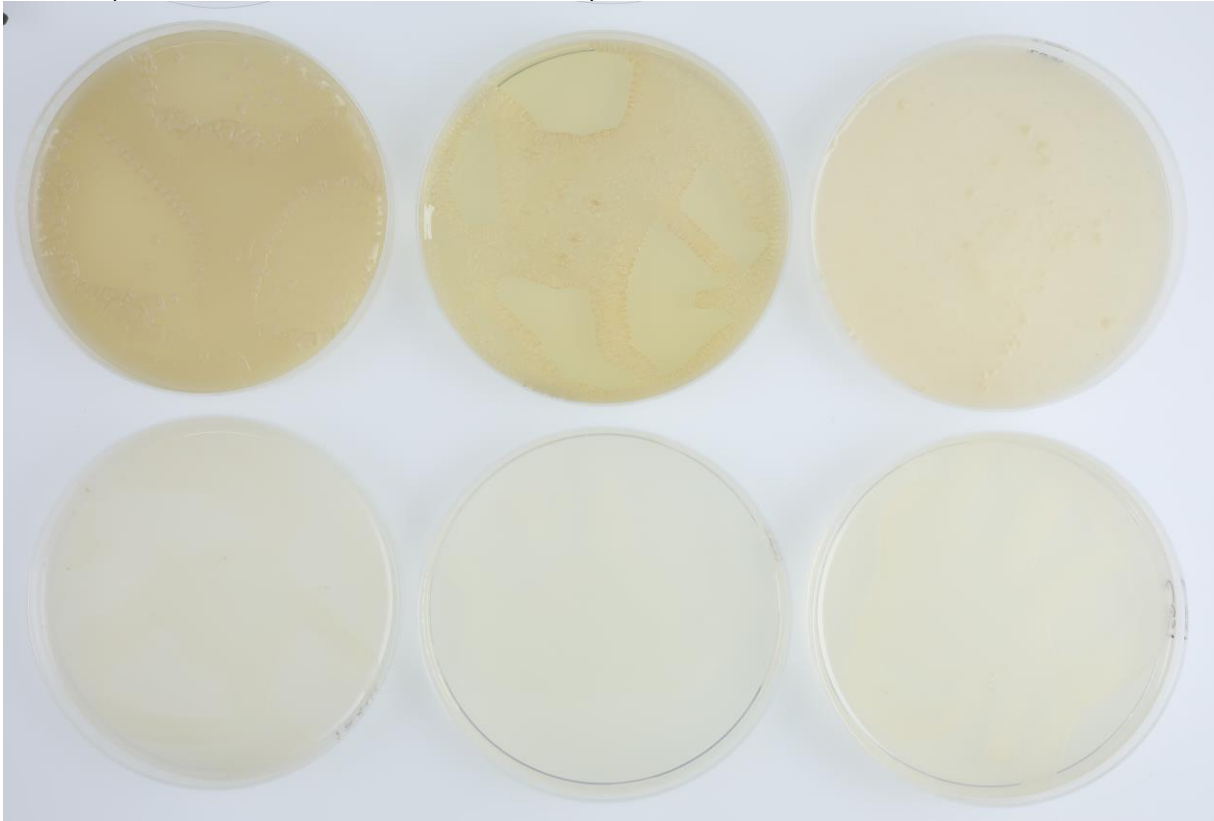
Abbildung 1: Apicoryne-Teststreifen mit Keim DSM.

Apizym

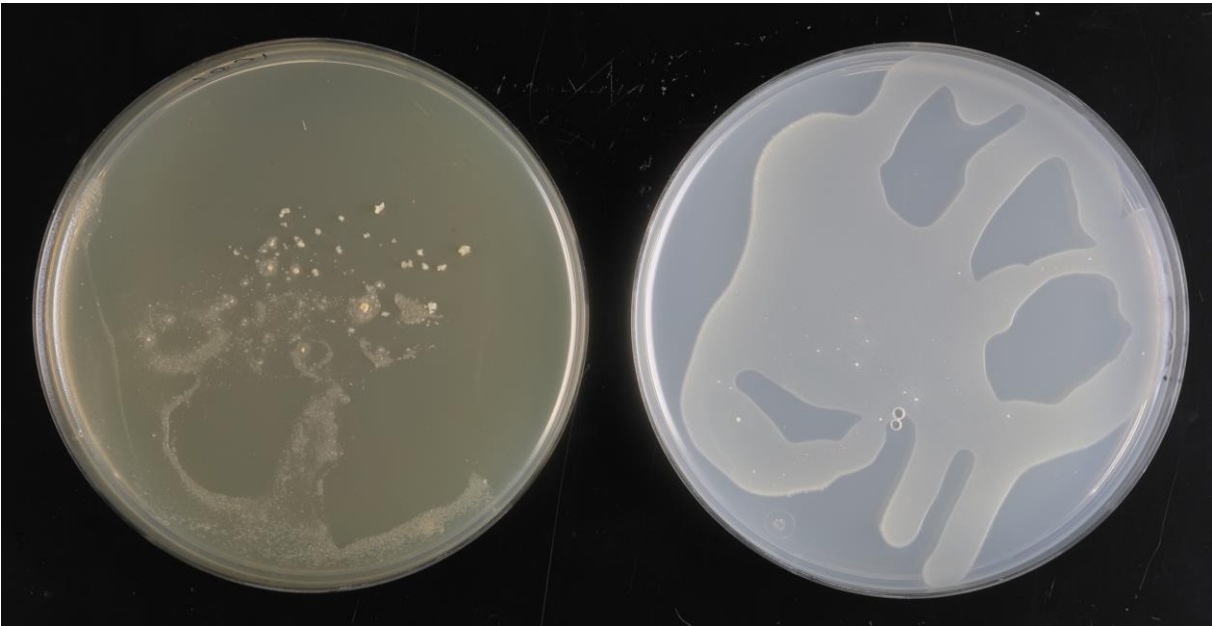
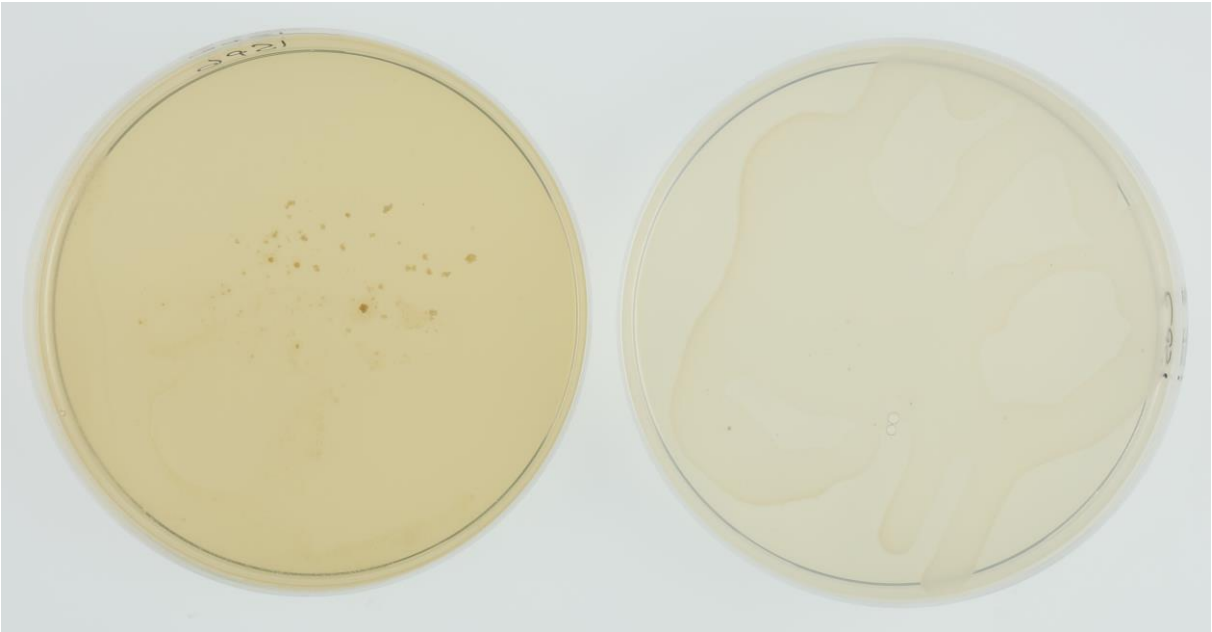


Abbildung 2: Apizym-Teststreifen mit Keim DSM.

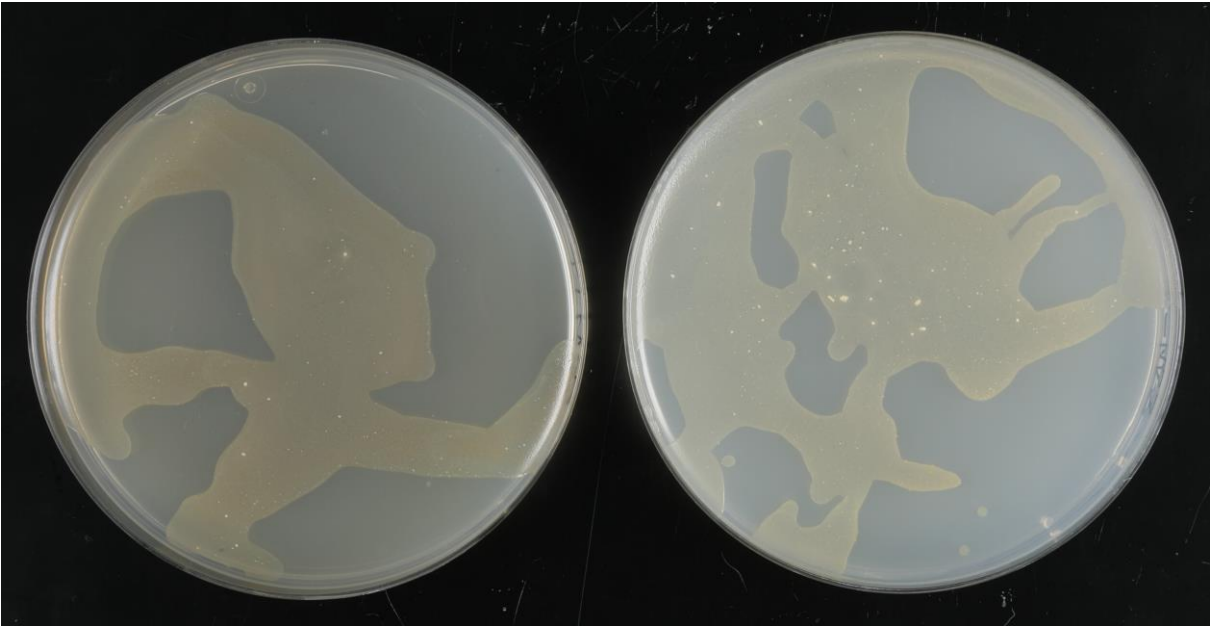
Plates (65, ISP2, ISP3, ISP4, ISP5, ISP7)



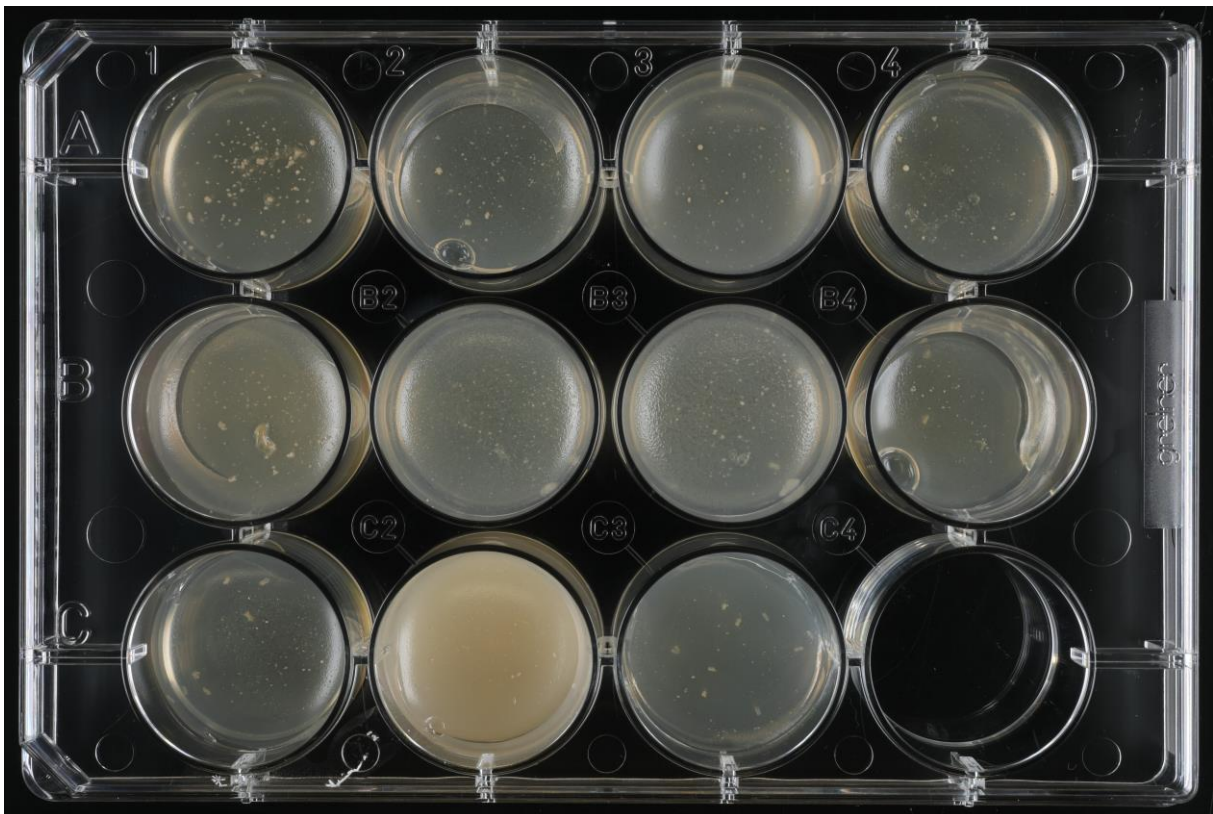
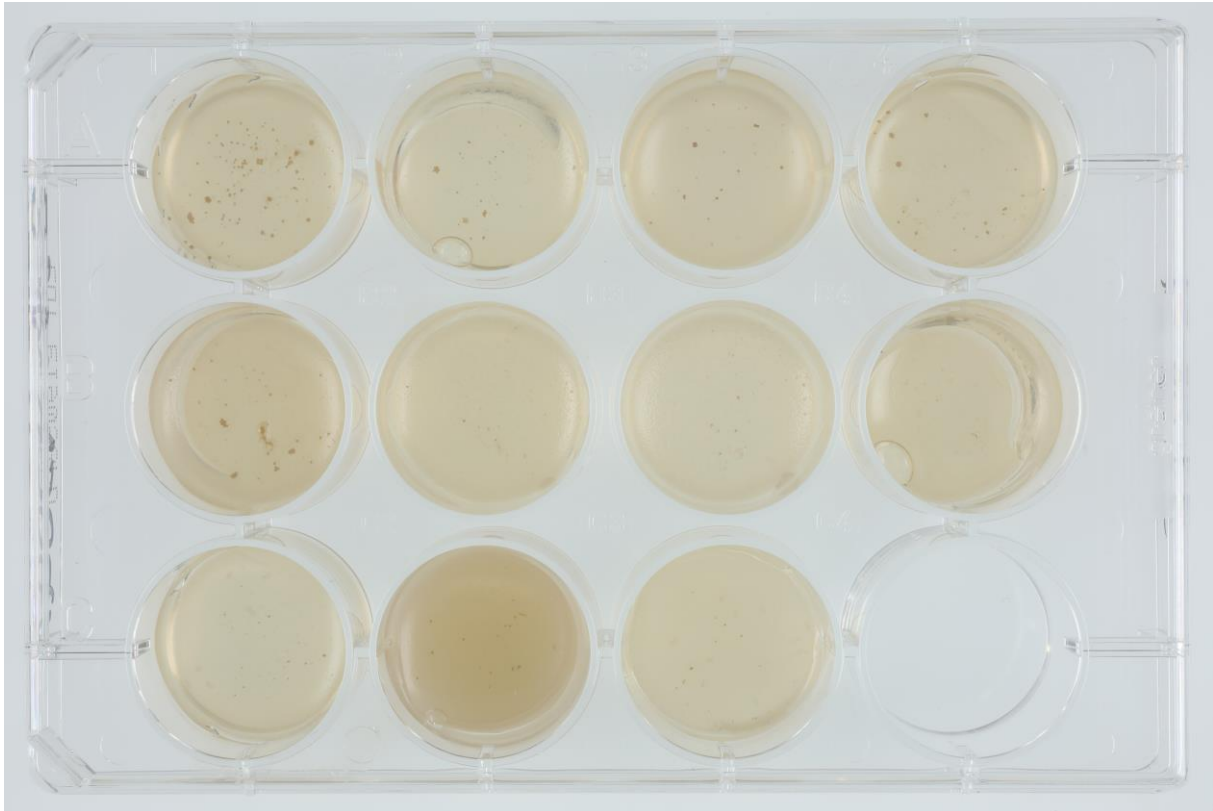
(ISP6, ISP7)



(SSM+T, SSM-T)



Carbon utilization test (from top left to bottom right: glucose, arabinose, sucrose, xylose, inositol, mannose, fructose, rhamnose, raffinose, cellulose)



Sodium chloride tolerance test (from top left to bottom right: 0%, 2,5%, 5%, 7,5%, 10%)

