

Compendium of Actinobacteria from Dr. Joachim M. Wink
University of Braunschweig

Strain		DSM 45361
Genus		<i>Labedaea</i>
Species		<i>rhizosphaerae</i>
Status		
Risk group		L1
Type strain		RS-49, KCTC 19662
Genbank accession number		16S rRNA gene: FM998036
Reference		
Author		Lee, S. D.
Title		Labedaea rhizosphaerae gen. nov., sp. nov., isolated from rhizosphere soil
Journal		Int J Syst Evol Microbiol
Volume		62 (Pt8)
Page		1772-1777
Year		2012
Morphology		
Agar	ISP 2 - growth/G	Good
Agar	ISP 2 - colony colour/R	1014 Ivory
Agar	ISP 2 - aerial mycelium/A	None
Agar	ISP 2 - soluble pigment/S	None
Agar	ISP 3 - G	Sparse
Agar	ISP 3 - R	1014 Ivory
Agar	ISP 3 - A	None
Agar	ISP 3 - S	None
Agar	ISP 4 - G	Good
Agar	ISP 4 - R	1015 Light ivory
Agar	ISP 4 - A	Good, 9010 Pure white
Agar	ISP 4 - S	None
Agar	ISP 5 - G	Good
Agar	ISP 5 - R	1015 Light ivory
Agar	ISP 5 - A	None
Agar	ISP 5 - S	None
Agar	ISP 6 - G	Sparse
Agar	ISP 6 - R	1014 Ivory
Agar	ISP 6 - A	None
Agar	ISP 6 - S	None
Agar	ISP 7 - G	Good
Agar	ISP 7 - R	1015 Light ivory
Agar	ISP 7 - A	Sparse, 9016 Traffic white
Agar	ISP 7 - S	None
Agar	suter with tyrosine - G	Good

Compendium of Actinobacteria from Dr. Joachim M. Wink
University of Braunschweig

Agar	suter with tyrosine - R	8007 Fawn brown, 8025 Pale brown
Agar	suter with tyrosine - A	None
Agar	suter with tyrosine - S	8001 Ochre brown
Agar	suter without tyrosine - G	Good
Agar	suter without tyrosine - R	8014 Sepia brown, 1011 Brown beige
Agar	suter without tyrosine - A	None
Agar	suter without tyrosine - S	8001 Ochre brown
	Sporechains/Sporangia	
Physiology		
Melanin		-
pH	range	
pH	optimum	
temperature	range	
temperature	optimum	
sodium chloride tolerance		10%
lysozyme tolerance		
use of carbohydrates	glucose	-
use of carbohydrates	arabinose	-
use of carbohydrates	sucrose	-
use of carbohydrates	xylose	-
use of carbohydrates	inositol	-
use of carbohydrates	mannose	-
use of carbohydrates	fructose	-
use of carbohydrates	rhamnose	-
use of carbohydrates	raffinose	-
use of carbohydrates	cellulose	-
Api zym	Phosphatase alkaline	1
Api zym	Esterase (C4)	3
Api zym	Esterase Lipase (C8)	3
Api zym	Lipase (C14)	1
Api zym	Leucin arylamidase	5
Api zym	Valine arylamidase	5
Api zym	Cystine arylamidase	1
Api zym	Trypsin	1
Api zym	Chymotrypsin	2
Api zym	Phosphatase acid	5
Api zym	Naphtol-AS-BI-phosphohydrolase	0
Api zym	alpha galactosidase	4
Api zym	beta galactosidase	0
Api zym	beta glucuronidase	0
Api zym	alpha glucosidase	5
Api zym	beta glucosidase	4
Api zym	N-acetyl-beta-glucoseamidase	5

Compendium of Actinobacteria from Dr. Joachim M. Wink
University of Braunschweig

Api zym	alpha mannosidase	4
Api zym	alpha fucosidase	5
Api coryne	nitrate reduction	-
Api coryne	Pyrazinamidase	+
Api coryne	Pyrrolidonyl arylamidase	+
Api coryne	Alkaline phosphatase	-
Api coryne	beta glucuronidase	-
Api coryne	beta galactosidase	-
Api coryne	alpha glucosidase	+
Api coryne	N-acetyl -beta glucoseamidase	+
Api coryne	Esculin (beta glucosidase)	+
Api coryne	Urease	-
Api coryne	Gelatine(hydrolysis)	+
Api coryne	Glucose fermentation	-
Api coryne	Ribose fermentation	-
Api coryne	Xylose fermentation	-
Api coryne	Mannitol fermentation	-
Api coryne	Maltose fermentation	-
Api coryne	Lactose fermentation	-
Api coryne	Sucrose fermentation	-
Api coryne	Glycogen fermentation	-
Metabolites		
Antimicrobial	Staphylococcus aureus	
Antimicrobial	Escherichia coli	
Antimicrobial	Micrococcus luteus	
Antimicrobial	Pseudomonas aeruginosa	
Antimicrobial	Streptomyces murinus	
Antimicrobial	Bacillus subtilis	
Antimicrobial	Candida albicans	
Antimicrobial	Saccharomyces cerevisiae	
Antimicrobial	Aspergillus niger	

APIcoryne



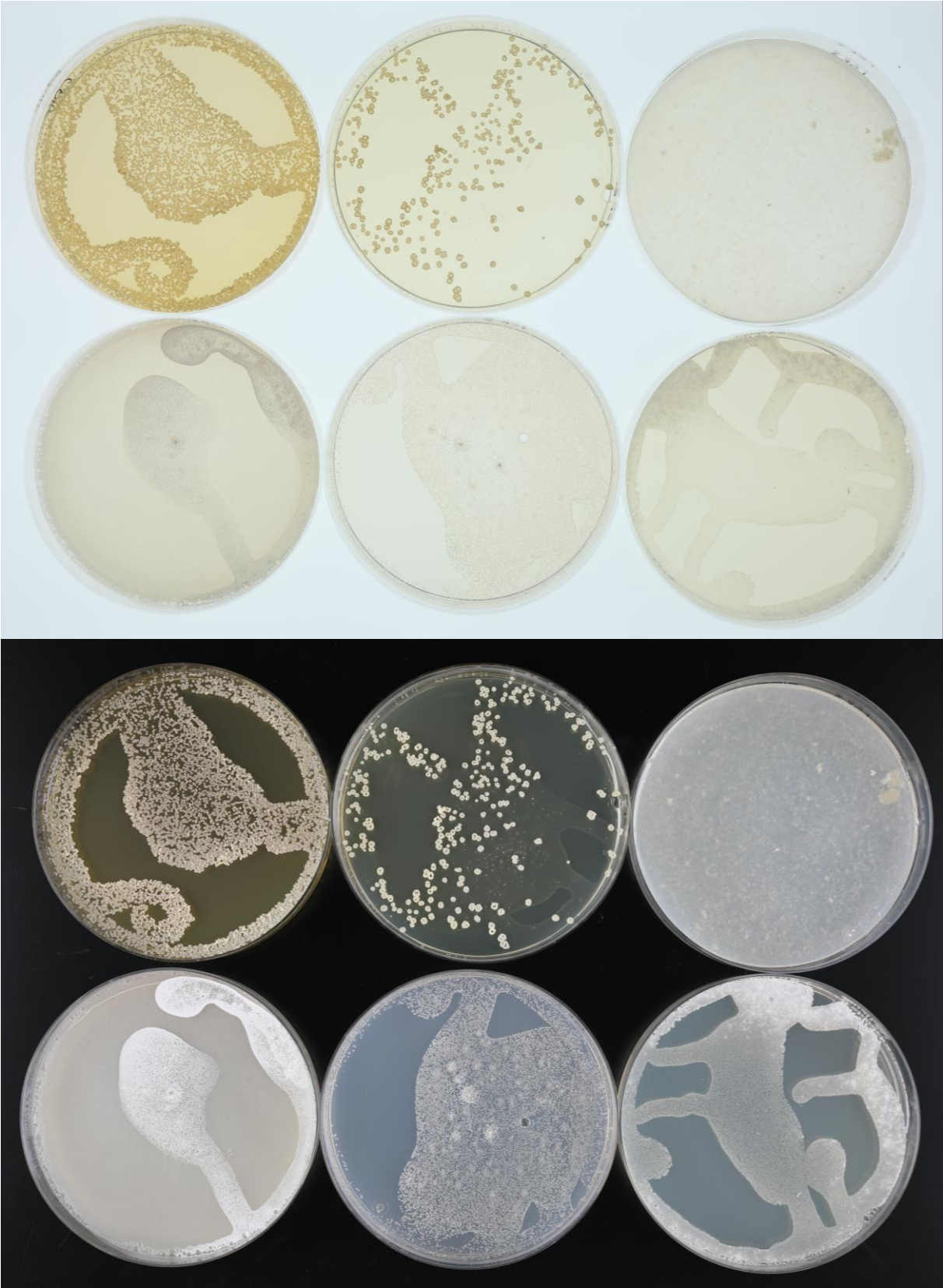
Abbildung 1: Apicoryne-Teststreifen mit Keim DSM.

APIzym

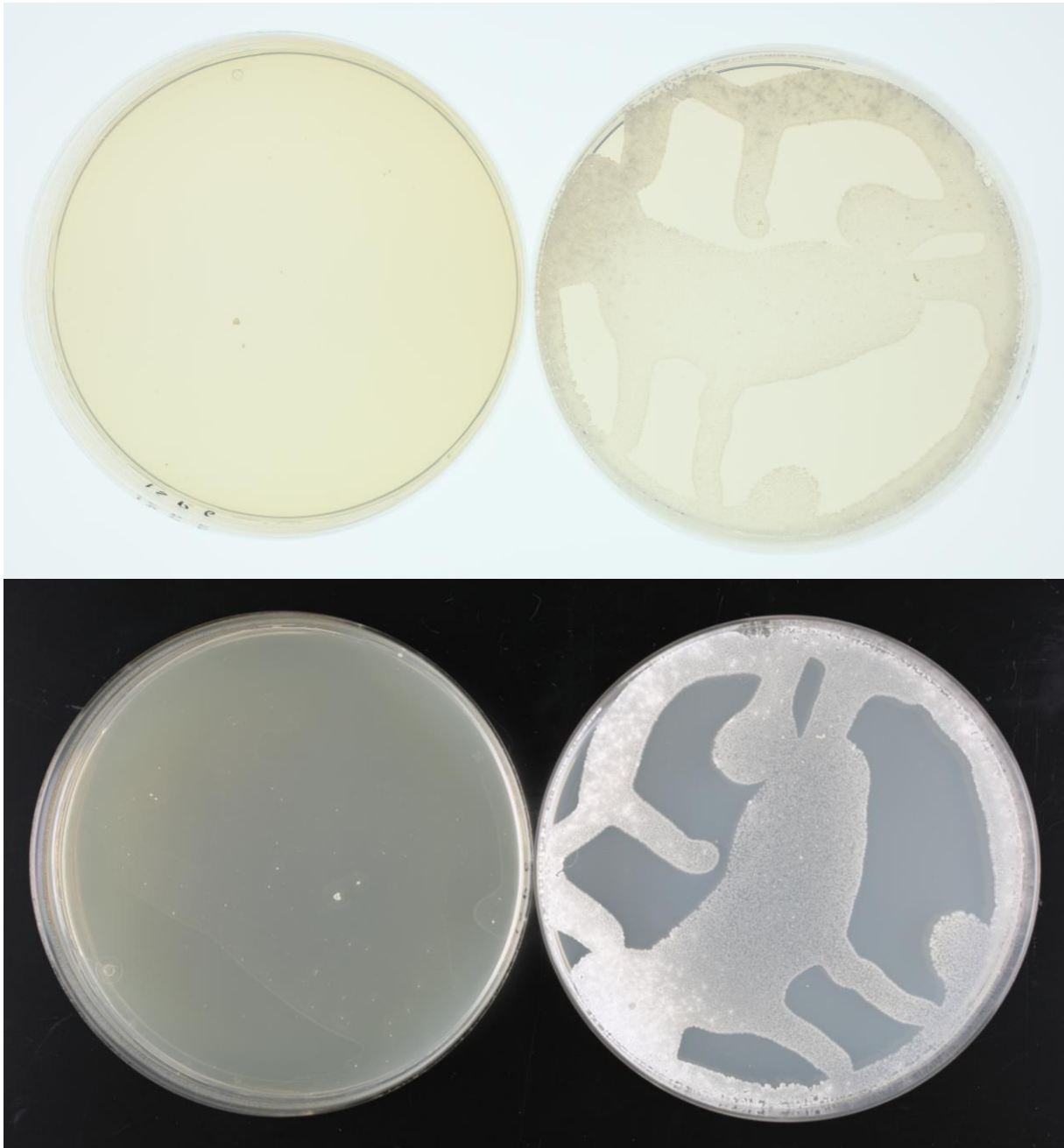


Abbildung 2: Apizym-Teststreifen mit Keim DSM.

Plates (553, ISP2, ISP3, ISP4, ISP5, ISP7)



(ISP6, ISP7)



(SSM+T, SSM-T)



Carbon utilization test (from top left to bottom right: glucose, arabinose, sucrose, xylose, inositol, mannose, fructose, rhamnose, raffinose, cellulose)



Sodium chloride tolerance test (from top left to bottom right: 0%, 2,5%, 5%, 7,5%, 10%)

