

Compendium of Actinobacteria from Dr. Joachim M. Wink
University of Braunschweig

Strain		DSM 45792
Genus		<i>Dactylosporangium</i>
Species		<i>tropicum</i>
Status		
Risk group		L1
Type strain		KB 2-4, BCC 34760, JCM 15673
Reference		
Author		Thawai, C., Tanasupawat, S., Kudo, T.
Title		<i>Dactylosporangium tropicum</i> sp. nov., isolated from soil.
Journal		<i>Int J Syst Evol Microbiol</i>
Volume		61 (Pt 10)
Page		2358-2362
Year		2011
Morphology		
Agar	ISP 2 - growth/G	good
Agar	ISP 2 - colony color/R	pastel yellow (1034)
Agar	ISP 2 - aerial mycelium/A	none
Agar	ISP 2 - soluble pigment/S	none
Agar	ISP 3 - G	good
Agar	ISP 3 - R	pastel yellow (1034) / light ivory (1015)
Agar	ISP 3 - A	none
Agar	ISP 3 - S	none
Agar	ISP 4 - G	good
Agar	ISP 4 - R	light ivory (1015)
Agar	ISP 4 - A	none
Agar	ISP 4 - S	none
Agar	ISP 5 - G	good
Agar	ISP 5 - R	light ivory (1015)
Agar	ISP 5 - A	none
Agar	ISP 5 - S	none
Agar	ISP 6 - G	good
Agar	ISP 6 - R	pastel yellow (1034) / traffic orange (2009)
Agar	ISP 6 - A	none
Agar	ISP 6 - S	none
Agar	ISP 7 - G	good
Agar	ISP 7 - R	light ivory (1015) / pastel yellow (1034)
Agar	ISP 7 - A	none
Agar	ISP 7 - S	none
Agar	suter with tyrosine - G	good
Agar	suter with tyrosine - R	saffron yellow (1017) / light ivory (1015)
Agar	suter with tyrosine - A	none

Compendium of Actinobacteria from Dr. Joachim M. Wink
University of Braunschweig

Agar	suter with tyrosine - S	sand yellow (1002)
Agar	suter without tyrosine - G	good
Agar	suter without tyrosine - R	pastel orange (2003) / pastel yellow (1034)
Agar	suter without tyrosine - A	none
Agar	suter without tyrosine - S	none
	Sporechains/Sporangia	
Physiology		
Melanin		(+)
pH	range	
pH	optimum	
temperature	range	
temperature	optimum	
sodium chloride tolerance		5%
lysozyme tolerance		
use of carbohydrates	glucose	+
use of carbohydrates	arabinose	+
use of carbohydrates	sucrose	+
use of carbohydrates	xylose	+
use of carbohydrates	inositol	-
use of carbohydrates	mannose	+
use of carbohydrates	fructose	+
use of carbohydrates	rhamnose	+
use of carbohydrates	raffinose	(+)
use of carbohydrates	cellulose	-
Api zym	Phosphatase alkaline	4
Api zym	Esterase (C4)	1
Api zym	Esterase Lipase (C8)	2
Api zym	Lipase (C14)	2
Api zym	Leucin arylamidase	5
Api zym	Valine arylamidase	1
Api zym	Cystine arylamidase	2
Api zym	Trypsin	4
Api zym	Chymotrypsin	0
Api zym	Phosphatase acid	4
Api zym	Naphtol-AS-BI-phosphohydrolase	2
Api zym	alpha galactosidase	3
Api zym	beta galactosidase	4
Api zym	beta glucuronidase	0
Api zym	alpha glucosidase	4
Api zym	beta GLUCOSIDASE	5
Api zym	N-acetyl-beta-glucoseamidase	4
Api zym	alpha mannosidase	3
Api zym	alpha fucosidase	0
Api coryne	nitrate reduction	+

Compendium of Actinobacteria from Dr. Joachim M. Wink
University of Braunschweig

Api coryne	Pyrazinamidase	-
Api coryne	Pyrrolidonyl arylamidase	-
Api coryne	Alkaline phosphatase	+
Api coryne	beta glucuronidase	-
Api coryne	beta galactosidase	-
Api coryne	alpha glucosidase	+
Api coryne	N-acetyl -beta glucoseamidase	+
Api coryne	Esculin (beta glucosidase)	+
Api coryne	Urease	-
Api coryne	Gelatine(hydrolysis)	+
Api coryne	Glucose fermentation	(+)
Api coryne	Ribose fermentation	-
Api coryne	Xylose fermentation	(+)
Api coryne	Mannitol fermentation	-
Api coryne	Maltose fermentation	(+)
Api coryne	Lactose fermentation	-
Api coryne	Sucrose fermentation	-
Api coryne	Glycogen fermentation	-
Metabolites		
Antimicrobial	Staphylococcus aureus	
Antimicrobial	Escherichia coli	
Antimicrobial	Micrococcus luteus	
Antimicrobial	Pseudomonas aeruginosa	
Antimicrobial	Streptomyces murinus	
Antimicrobial	Bacillus subtilis	
Antimicrobial	Candida albicans	
Antimicrobial	Saccharomyces cerevisiae	
Antimicrobial	Aspergillus niger	

Apicoryne



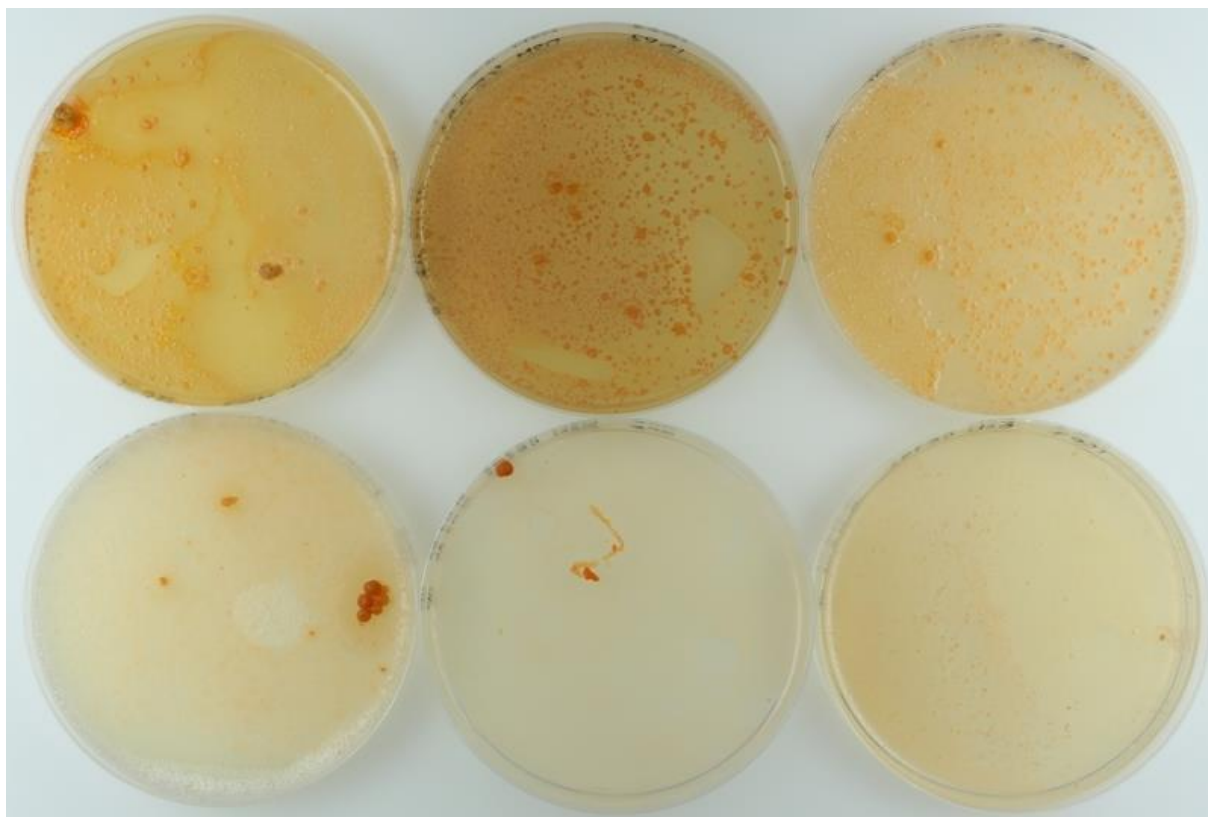
Abbildung 1: Apicoryne-Teststreifen mit Keim DSM 45792.

Apizym

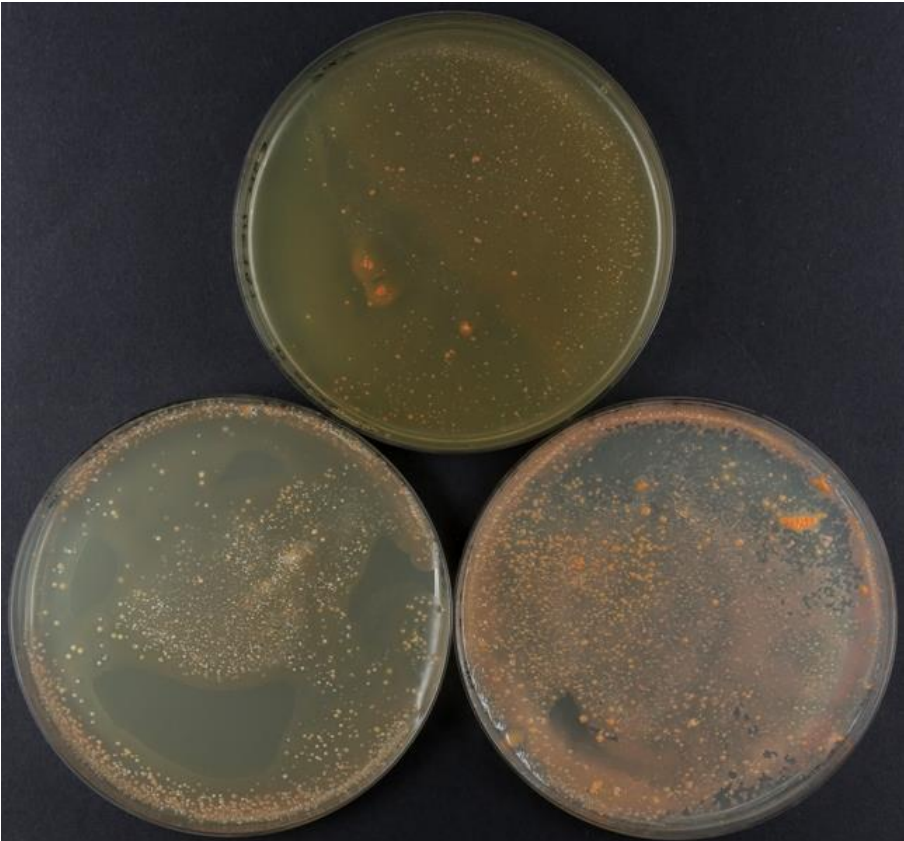


Abbildung 2: Apizym-Teststreifen mit Keim DSM 45792.

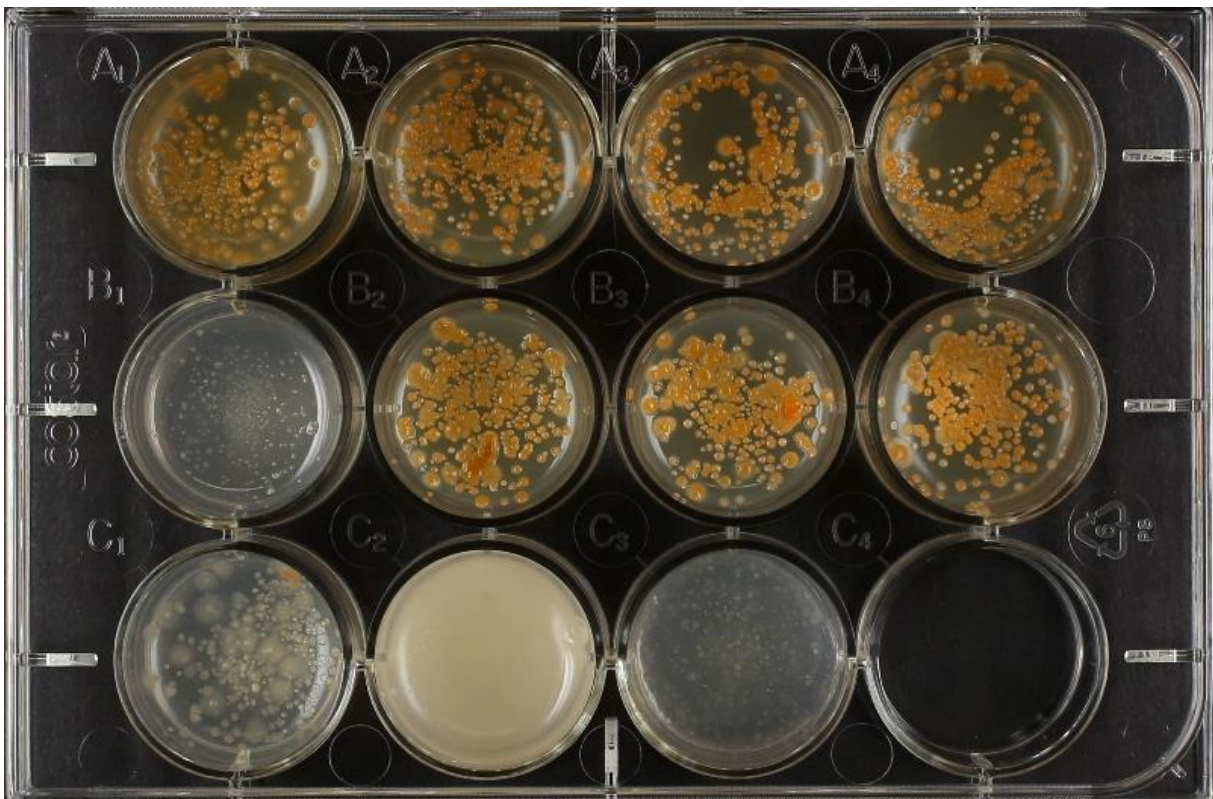
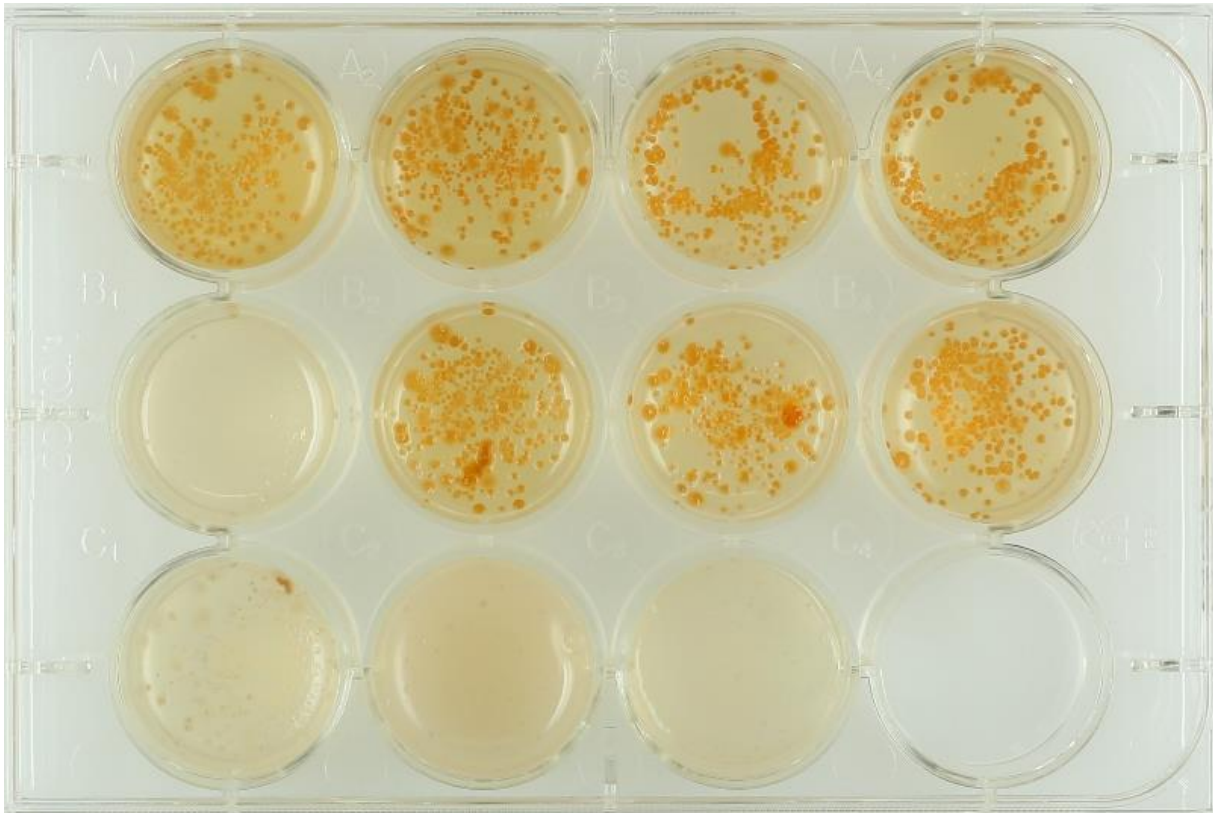
Plates (65, ISP2, ISP3, ISP4, ISP5, ISP7)



(ISP6, SSM+T, SSM-T)



Carbon utilization test (from top left to bottom right: glucose, arabinose, sucrose, xylose, inositol, mannose, fructose, rhamnose, raffinose, cellulose)



Sodium chloride tolerance test (from top left to bottom right: 0%, 2,5%, 5%, 7,5%, 10%)

