

Compendium of Actinobacteria from Dr. Joachim M. Wink  
University of Braunschweig

Strain		DSM 45805
Genus		<b><i>Amycolatopsis</i></b>
Species		<b><i>thermophila</i></b>
Status		
Risk group		L1
Type strain		GY088, NCIMB 14699, NRRL B-24836
Reference		
Author		Zucchi, T. D., Tan, G. Y., Goodfellow, M. (2012).
Title		<i>Amycolatopsis thermophila</i> sp. nov. and <i>Amycolatopsis viridis</i> sp. nov., thermophilic actinomycetes isolated from arid soil.
Journal		<i>Int J Syst Evol Microbiol</i>
Volume		<b>62</b> ( Pt 1 )
Page		168-172
Year		2012
Morphology		
Agar	ISP 2 - growth/G	good
Agar	ISP 2 - colony color/R	sand yellow (1002)
Agar	ISP 2 - aerial mycelium/A	sparse
Agar	ISP 2 - soluble pigment/S	none
Agar	ISP 3 - G	decreased
Agar	ISP 3 - R	light ivory (1015)
Agar	ISP 3 - A	none
Agar	ISP 3 - S	none
Agar	ISP 4 - G	sparse
Agar	ISP 4 - R	n. d.
Agar	ISP 4 - A	none
Agar	ISP 4 - S	none
Agar	ISP 5 - G	good
Agar	ISP 5 - R	traffic yellow (1023)
Agar	ISP 5 - A	pure white (9010)
Agar	ISP 5 - S	none
Agar	ISP 6 - G	good
Agar	ISP 6 - R	sand yellow (1002)
Agar	ISP 6 - A	none
Agar	ISP 6 - S	none
Agar	ISP 7 - G	good
Agar	ISP 7 - R	traffic yellow (1023)
Agar	ISP 7 - A	pure white (9010)
Agar	ISP 7 - S	none
Agar	suter with tyrosine - G	good
Agar	suter with tyrosine - R	ivory (1014)
Agar	suter with tyrosine - A	none

Compendium of Actinobacteria from Dr. Joachim M. Wink  
University of Braunschweig

Agar	suter with tyrosine - S	light ivory (1015)
Agar	suter without tyrosine - G	good
Agar	suter without tyrosine - R	light ivory (1015)
Agar	suter without tyrosine - A	none
Agar	suter without tyrosine - S	none
	Sporechains/Sporangia	
Physiology		
Melanin		-
pH	range	
pH	optimum	
temperature	range	
temperature	optimum	
sodium chloride tolerance		5%
lysozyme tolerance		
use of carbohydrates	glucose	+
use of carbohydrates	arabinose	(+)
use of carbohydrates	sucrose	-
use of carbohydrates	xylose	+
use of carbohydrates	inositol	-
use of carbohydrates	mannose	+
use of carbohydrates	fructose	+
use of carbohydrates	rhamnose	+
use of carbohydrates	raffinose	-
use of carbohydrates	cellulose	-
Api zym	Phosphatase alkaline	5
Api zym	Esterase (C4)	2
Api zym	Esterase Lipase (C8)	3
Api zym	Lipase (C14)	1
Api zym	Leucin arylamidase	5
Api zym	Valine arylamidase	2
Api zym	Cystine arylamidase	1
Api zym	Trypsin	0
Api zym	Chymotrypsin	0
Api zym	Phosphatase acid	4
Api zym	Naphtol-AS-BI-phosphohydrolase	0
Api zym	alpha galactosidase	0
Api zym	beta galactosidase	0
Api zym	beta glucuronidase	0
Api zym	alpha glucosidase	0
Api zym	beta GLUCOSIDASE	3
Api zym	N-acetyl-beta-glucoseamidase	5
Api zym	alpha mannosidase	0
Api zym	alpha fucosidase	0
Api coryne	nitrate reduction	-

Compendium of Actinobacteria from Dr. Joachim M. Wink  
University of Braunschweig

Api coryne	Pyrazinamidase	-
Api coryne	Pyrrolidonyl arylamidase	-
Api coryne	Alkaline phosphatase	+
Api coryne	beta glucuronidase	-
Api coryne	beta galactosidase	-
Api coryne	alpha glucosidase	-
Api coryne	N-acetyl -beta glucoseamidase	+
Api coryne	Esculin (beta glucosidase)	-
Api coryne	Urease	-
Api coryne	Gelatine(hydrolysis)	+
Api coryne	Glucose fermentation	-
Api coryne	Ribose fermentation	-
Api coryne	Xylose fermentation	-
Api coryne	Mannitol fermentation	-
Api coryne	Maltose fermentation	-
Api coryne	Lactose fermentation	-
Api coryne	Sucrose fermentation	-
Api coryne	Glycogen fermentation	-
Metabolites		
Antimicrobial	Staphylococcus aureus	
Antimicrobial	Escherichia coli	
Antimicrobial	Micrococcus luteus	
Antimicrobial	Pseudomonas aeruginosa	
Antimicrobial	Streptomyces murinus	
Antimicrobial	Bacillus subtilis	
Antimicrobial	Candida albicans	
Antimicrobial	Saccharomyces cerevisiae	
Antimicrobial	Aspergillus niger	

## Apicoryne



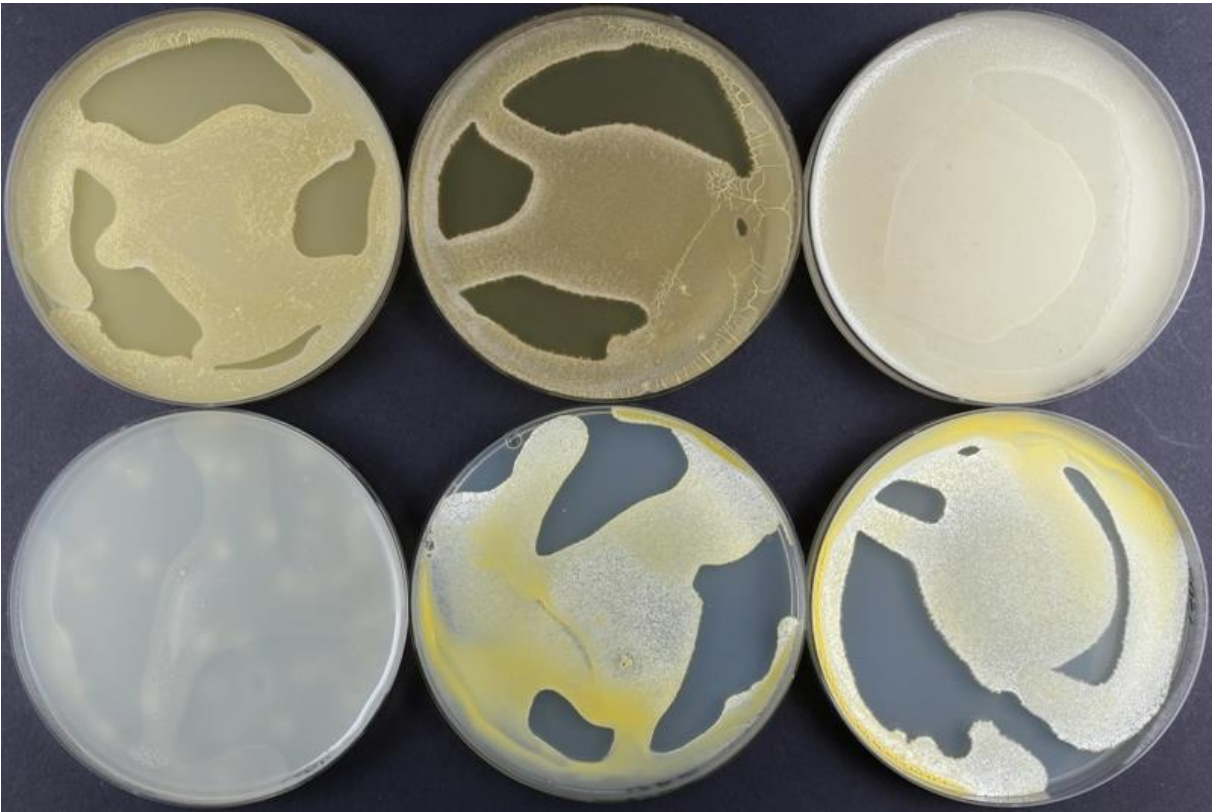
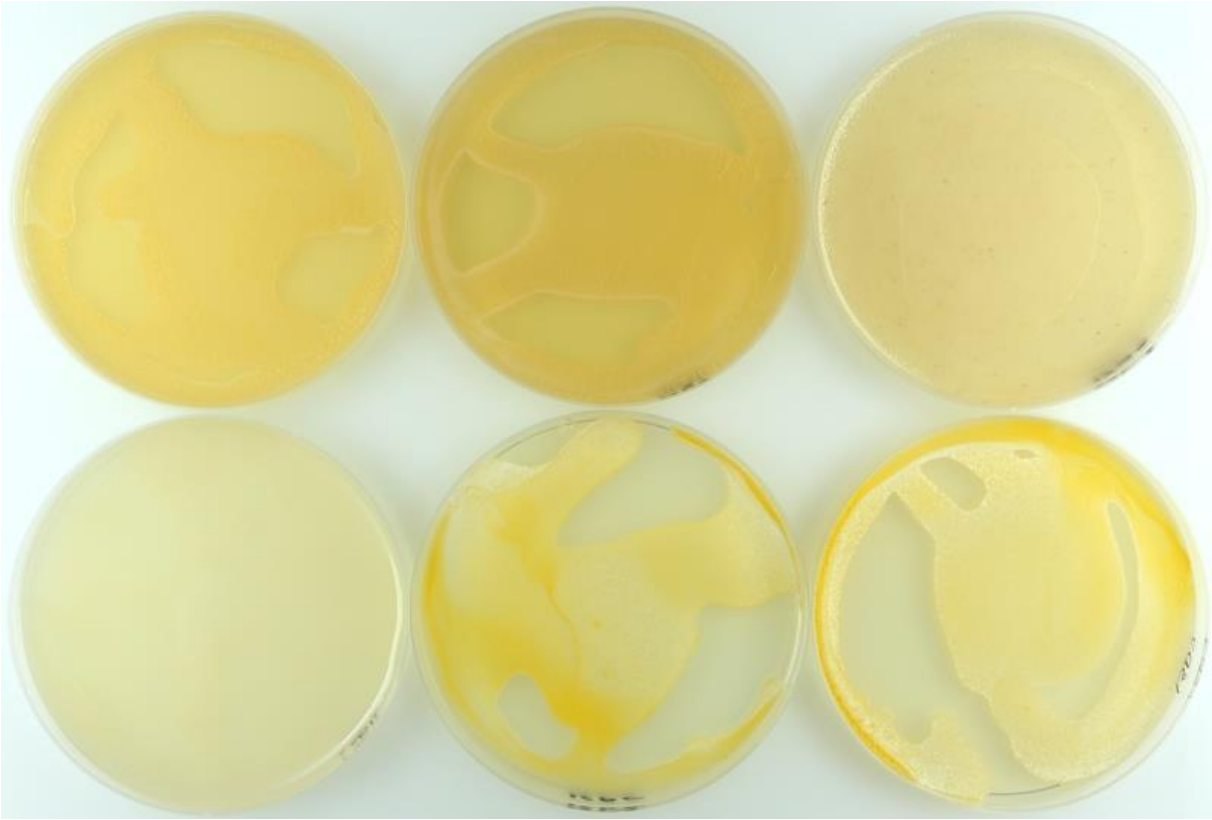
Abbildung 1: Apicoryne-Teststreifen mit Keim DSM 45805.

## Apizym

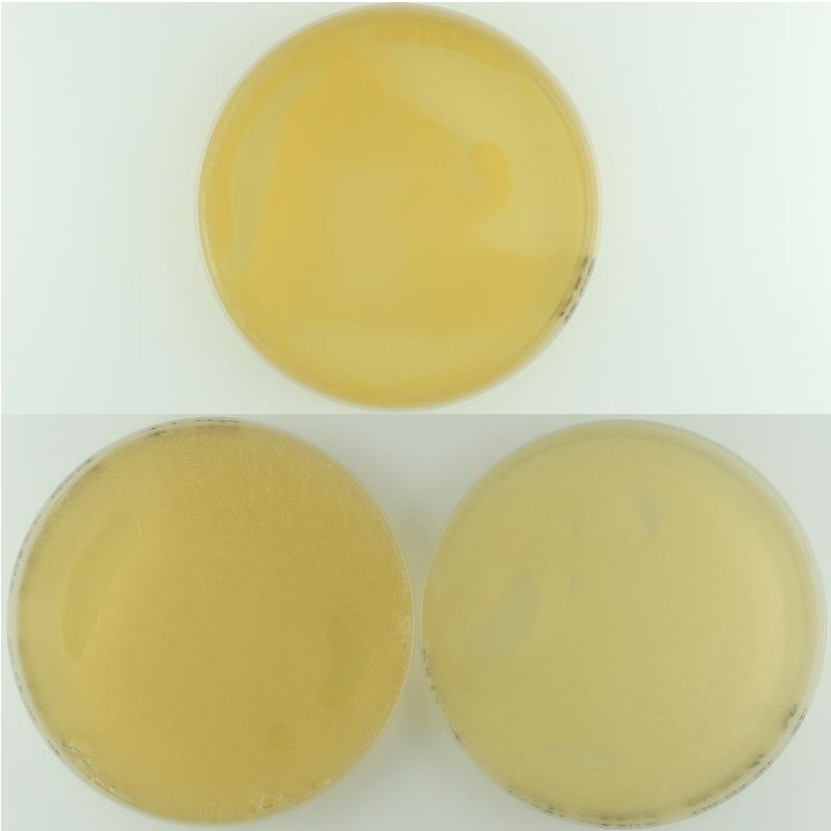


Abbildung 2: Apizym-Teststreifen mit Keim DSM 45805.

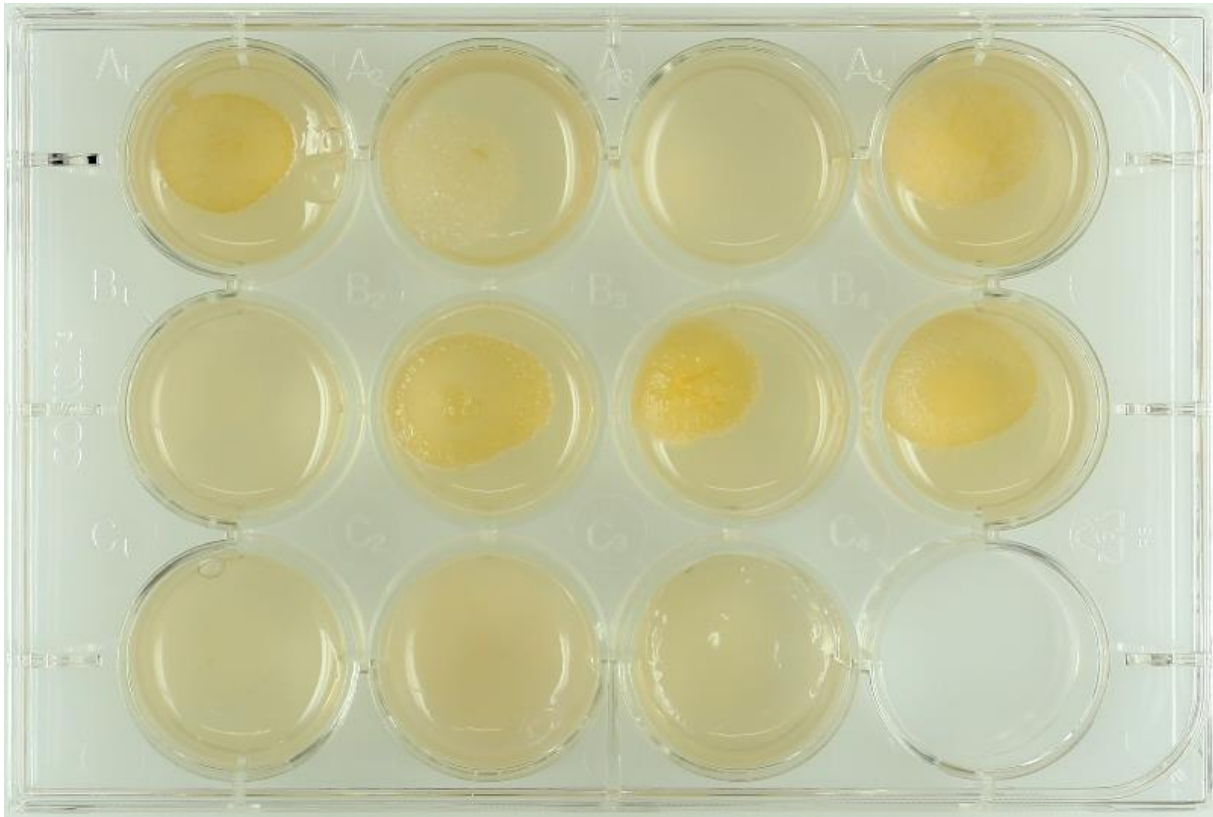
**Plates** (65, ISP2, ISP3, ISP4, ISP5, ISP7)



(ISP6, SSM+T, SSM-T)



**Carbon utilization test (from top left to bottom right: glucose, arabinose, sucrose, xylose, inositol, mannose, fructose, rhamnose, raffinose, cellulose)**



**Sodium chloride tolerance test (from top left to bottom right: 0%, 2,5%, 5%, 7,5%, 10%)**

