

Compendium of Actinobacteria from Dr. Joachim M. Wink  
University of Braunschweig

<b>Strain</b>		DSM 45867
Genus		<i>Acrocarpospora</i>
Species		<i>phusangensis</i>
<b>Status</b>		
Risk group		L1
Type strain		PS33-18, BCC 46906, NBRC 108782
Genbank accession number		16S rRNA gene: <a href="#">AB649124</a>
<b>Reference</b>		
Author		Niemhom, N., Suriyachadkun, C., Tamura, T., Thawai, C.
Title		Acrocarpospora phusangensis sp. nov., isolated from a temperate peat swamp forest soil
Journal		Int J Syst Evol Microbiol
Volume		63 (Pt6)
Page		2174-2179
Year		2013
<b>Morphology</b>		
Agar	ISP 2 - growth/G	Good
Agar	ISP 2 - colony colour/R	1002 sand yellow
Agar	ISP 2 - aerial mycelium/A	None
Agar	ISP 2 - soluble pigment/S	None
Agar	ISP 3 - G	Good
Agar	ISP 3 - R	1015 light ivory
Agar	ISP 3 - A	Sparse, 9001 cream
Agar	ISP 3 - S	None
Agar	ISP 4 - G	Good
Agar	ISP 4 - R	1014 ivory
Agar	ISP 4 - A	None
Agar	ISP 4 - S	None
Agar	ISP 5 - G	Good
Agar	ISP 5 - R	1015 light ivory
Agar	ISP 5 - A	None
Agar	ISP 5 - S	None
Agar	ISP 6 - G	None
Agar	ISP 6 - R	-
Agar	ISP 6 - A	-
Agar	ISP 6 - S	-
Agar	ISP 7 - G	Good
Agar	ISP 7 - R	1015 light ivory
Agar	ISP 7 - A	Sparse, 9001 cream
Agar	ISP 7 - S	None
Agar	suter with tyrosine - G	Good

Compendium of Actinobacteria from Dr. Joachim M. Wink  
University of Braunschweig

Agar	suter with tyrosine - R	1015 light ivory, 1011 brown beige
Agar	suter with tyrosine - A	None
Agar	suter with tyrosine - S	None
Agar	suter without tyrosine - G	Good
Agar	suter without tyrosine - R	1015 light ivory, 1020 olive yellow
Agar	suter without tyrosine - A	None
Agar	suter without tyrosine - S	None
	Sporechains/Sporangia	
<b>Physiology</b>		
Melanin		0
pH	range	
pH	optimum	
temperature	range	
temperature	optimum	
sodium chloride tolerance		0%
lysozyme tolerance		
use of carbohydrates	glucose	+
use of carbohydrates	arabinose	(+)
use of carbohydrates	sucrose	+
use of carbohydrates	xylose	+
use of carbohydrates	inositol	+
use of carbohydrates	mannose	+
use of carbohydrates	fructose	+
use of carbohydrates	rhamnose	+
use of carbohydrates	raffinose	(+)
use of carbohydrates	cellulose	(+)
Api zym	Phosphatase alkaline	5
Api zym	Esterase (C4)	3
Api zym	Esterase Lipase (C8)	0
Api zym	Lipase (C14)	0
Api zym	Leucin arylamidase	5
Api zym	Valine arylamidase	5
Api zym	Cystine arylamidase	0
Api zym	Trypsin	0
Api zym	Chymotrypsin	0
Api zym	Phosphatase acid	5
Api zym	Naphtol-AS-BI-phosphohydrolase	5
Api zym	alpha galactosidase	0
Api zym	beta galactosidase	4
Api zym	beta glucuronidase	0
Api zym	alpha glucosidase	2
Api zym	beta glucosidase	0
Api zym	N-acetyl-beta-glucoseamidase	3
Api zym	alpha mannosidase	0

Api zym	alpha fucosidase	0
Api coryne	nitrate reduction	-
Api coryne	Pyrazinamidase	-
Api coryne	Pyrrolidonyl arylamidase	-
Api coryne	Alkaline phosphatase	+
Api coryne	beta glucuronidase	-
Api coryne	beta galactosidase	+
Api coryne	alpha glucosidase	+
Api coryne	N-acetyl -beta glucoseamidase	+
Api coryne	Esculin (beta glucosidase)	+
Api coryne	Urease	+
Api coryne	Gelatine(hydrolysis)	-
Api coryne	Glucose fermentation	-
Api coryne	Ribose fermentation	-
Api coryne	Xylose fermentation	-
Api coryne	Mannitol fermentation	-
Api coryne	Maltose fermentation	-
Api coryne	Lactose fermentation	-
Api coryne	Sucrose fermentation	-
Api coryne	Glycogen fermentation	-
<b>Metabolites</b>		
Antimicrobial	Staphylococcus aureus	
Antimicrobial	Escherichia coli	
Antimicrobial	Micrococcus luteus	
Antimicrobial	Pseudomonas aeruginosa	
Antimicrobial	Streptomyces murinus	
Antimicrobial	Bacillus subtilis	
Antimicrobial	Candida albicans	
Antimicrobial	Saccharomyces cerevisiae	
Antimicrobial	Aspergillus niger	

### APIcoryne



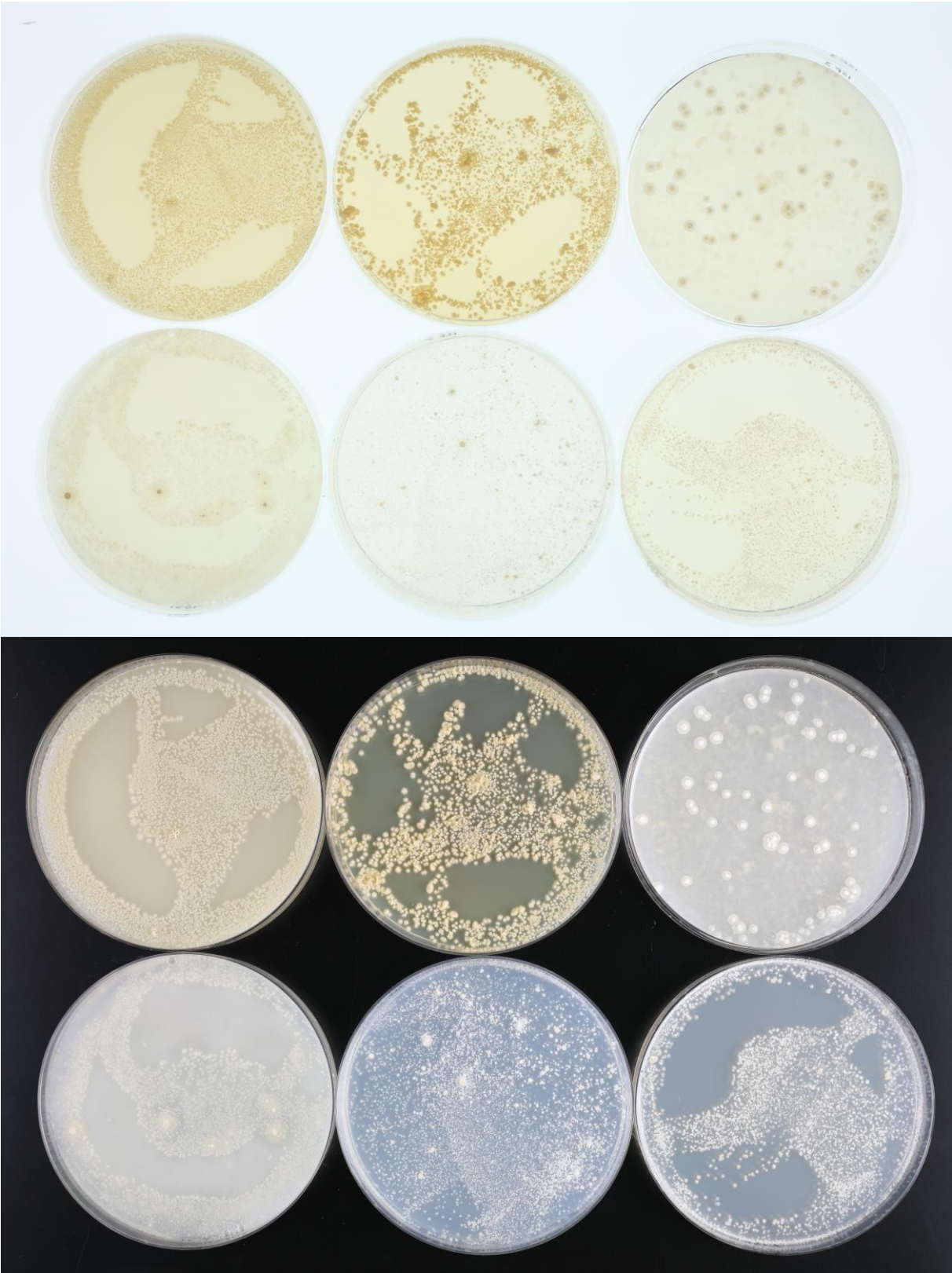
Abbildung 1: Apicoryne-Teststreifen mit Keim DSM.

### APIzym

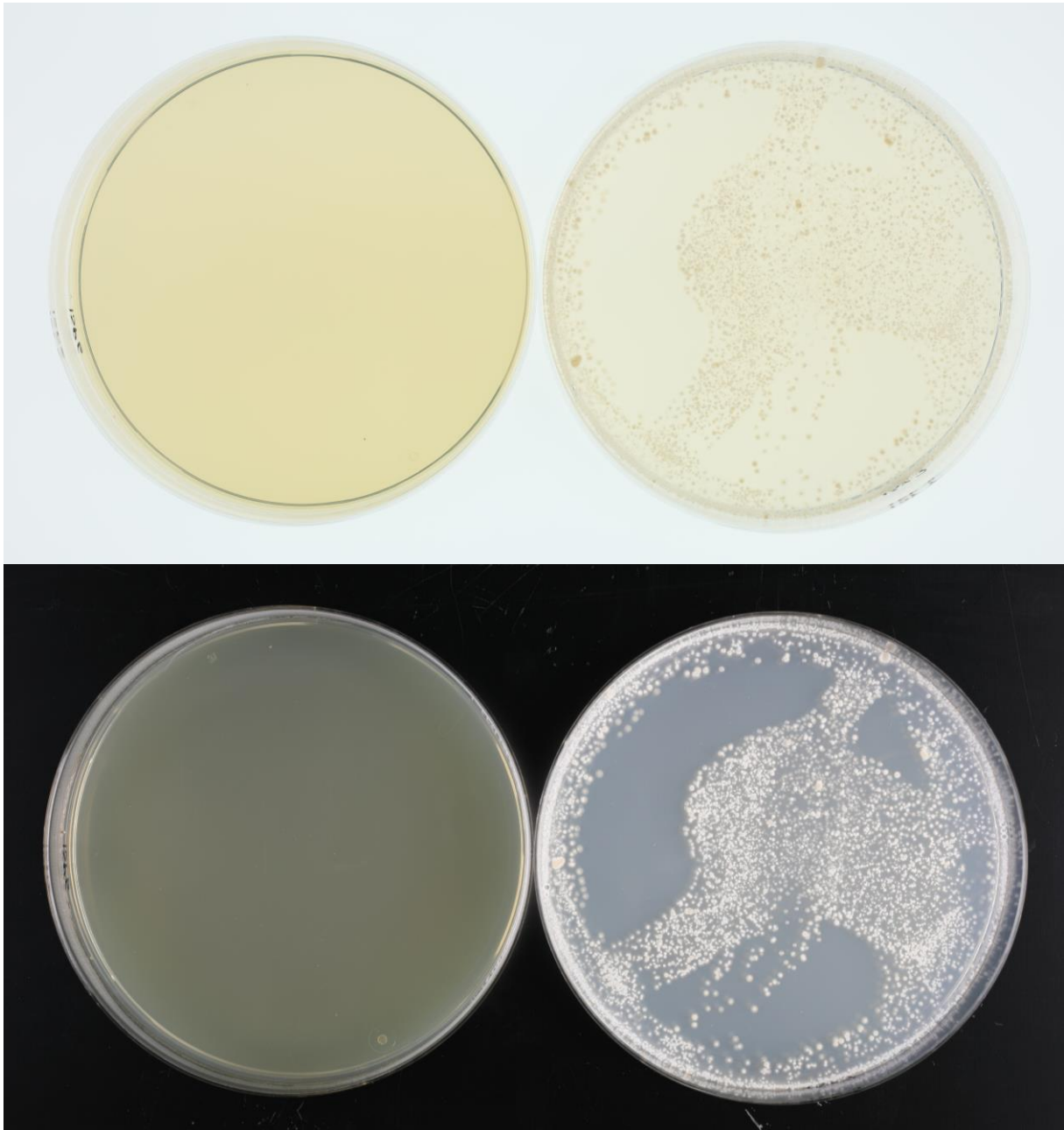


Abbildung 2: Apizym-Teststreifen mit Keim DSM.

**Plates (65, ISP2, ISP3, ISP4, ISP5, ISP7)**

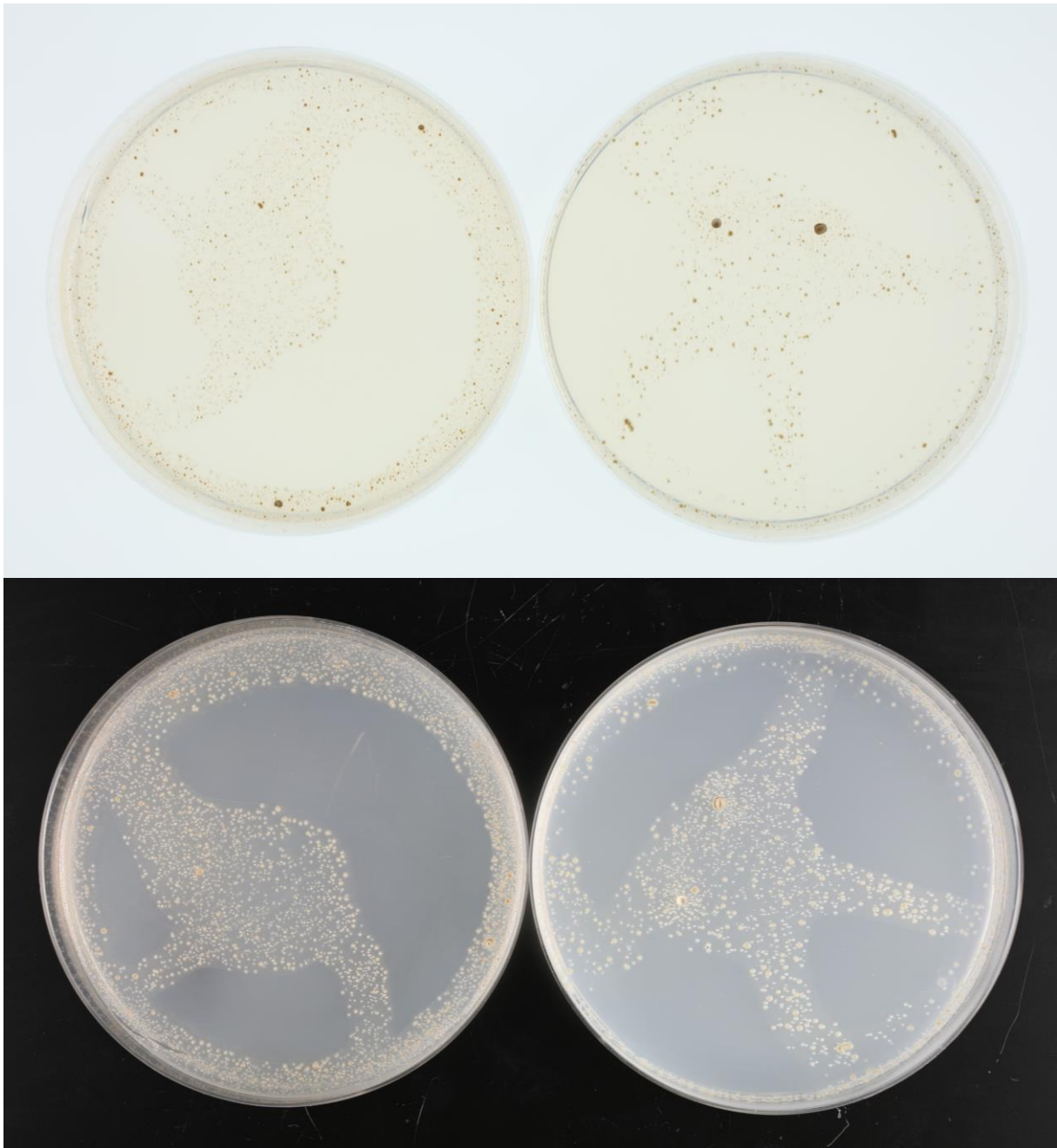


(ISP6, ISP7)

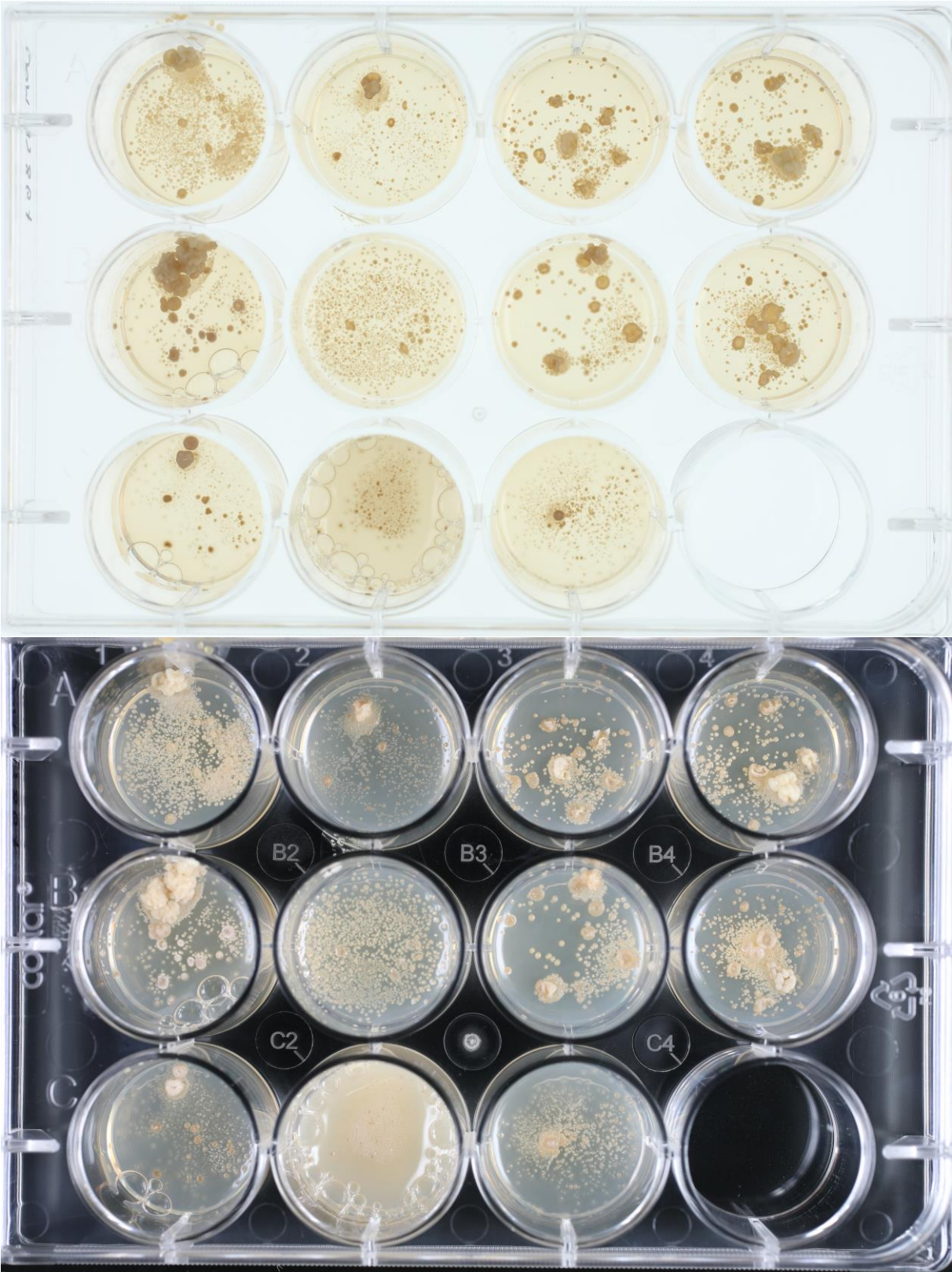




(SSM+T, SSM-T)



**Carbon utilization test (from top left to bottom right: glucose, arabinose, sucrose, xylose, inositol, mannose, fructose, rhamnose, raffinose, cellulose)**





**Sodium chloride tolerance test (from top left to bottom right: 0%, 2,5%, 5%, 7,5%, 10%)**

